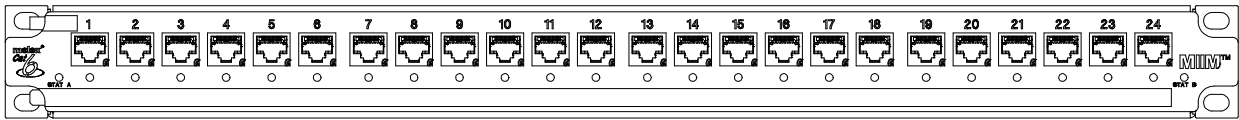


## TITLE MIIM CATEGORY 6 PATCH PANEL



### 1.0 SCOPE

This document provides installation instructions of MIIM category 6 patch panel.

### 2.0 PRODUCT DESCRIPTION

This is a MIIM category 6 patch panel.

Order No.	SAP No.	Description
PID-00221	183200000	MIIM Category 6, 1U, 24 Port Patch Panel 568A/B

### 3.0 REFERENCE INFORMATION

#### Parts List

- MIIM Category 6 Patch Panel with integral cable management tray.
- Front labeling card index strip
- International Hardware kit
- Termination cap

### 4.0 PROCEDURE

#### 4.1 GENERAL REQUIREMENTS

110 punch down tool, cable strippers, wire clippers, and screwdriver

#### PROCEDURE

##### 1. Termination Tool



110 Termination tool set on low impact

MPN NO.	SAP NO.
215-379	187000357

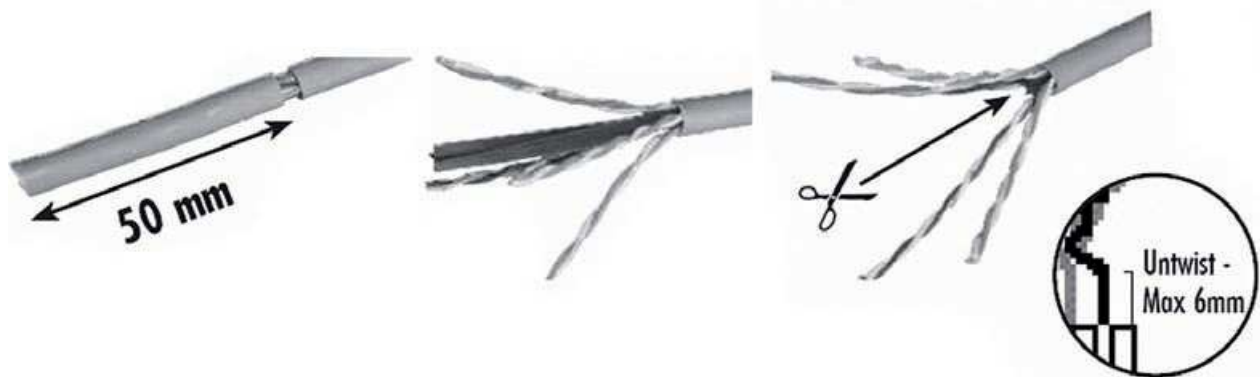
REVISION: <b>A1</b>	ECR/ECN INFORMATION: EC No: <b>MTS2012-0064</b> DATE: <b>2013 / 05 / 23</b>	TITLE: <b>INSTALLATION INSTRUCTIONS ON MIIM CATEGORY 6 PATCH PANEL</b>	SHEET No. <b>1 of 4</b>
DOCUMENT NUMBER: <b>AS-18700-047</b>	CREATED / REVISED BY: <b>BJ Mahendra</b>	CHECKED BY: <b>CG Raghavan</b>	APPROVED BY: <b>Samuel Huber</b>

## 4.2 ASSEMBLY INSTRUCTIONS

### 1. Cable Preparation

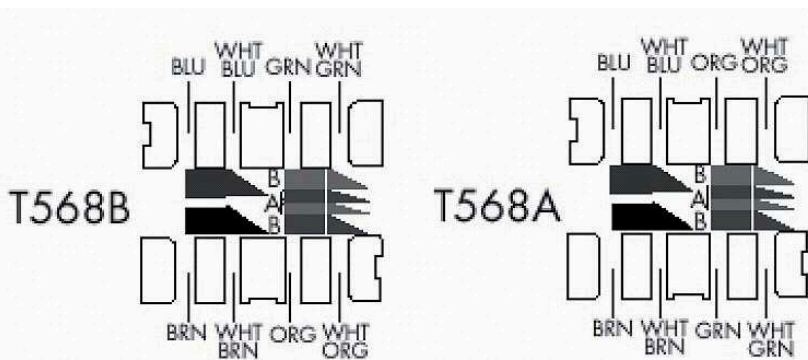
- 1a. With the hardware kit provided, mount panel to rack so that jack ports are facing forward and the IDC connectors are in the rear.
- 1b. Route cable along intended pathway through the frame or enclosure to the desired location on the rear-side of the panel. Allow a 6" slack or service loop at the rear of the panel. A 1.5" minimum bend radius for each port is recommended during termination and dressing of individual ports.

### 2. Prepare individual 4-pair cables by stripping back insulation 50mm exposing individual wires.



### 3. Cable Termination and Dressing

- 3a. Beginning with jack one, terminate ports by laying the wires in the proper sequence across the contacts and by punching down with a termination tool set on low impact.



MPN NO.	SAP NO.
215-379	187000357

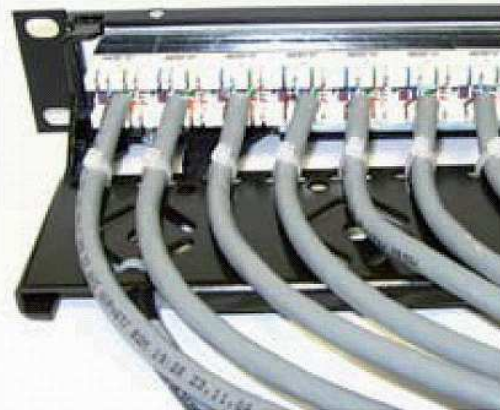
REVISION: <b>A1</b>	ECR/ECN INFORMATION: EC No: <b>MTS2012-0064</b> DATE: <b>2013 / 05 / 23</b>	TITLE: <b>INSTALLATION INSTRUCTIONS ON MIIM CATEGORY 6 PATCH PANEL</b>	SHEET No. <b>2 of 4</b>
DOCUMENT NUMBER: <b>AS-18700-047</b>	CREATED / REVISED BY: <b>BJ Mahendra</b>	CHECKED BY: <b>CG Raghavan</b>	APPROVED BY: <b>Samuel Huber</b>

## 4. Cable Dressing and Strain Relief.

4a. Cable should be dressed from left or right on alternate panels.

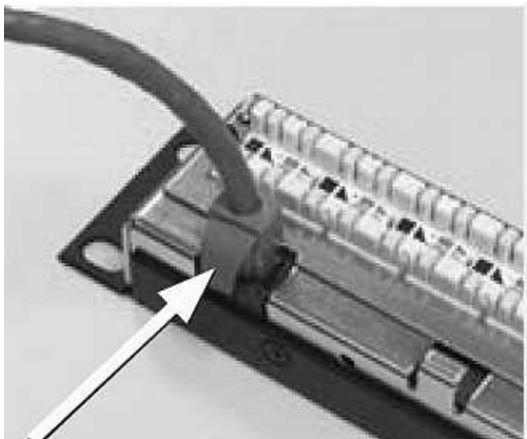
4b. Dress cable on to rear cable management tray.

4c. Install Stuffer cap for strain relief.



## 5. Connect communications bus cable

Connect communications bus cable to a RJ45 connector located on the back of the panel.  
Attach other end to the desired MIIM scanner port.

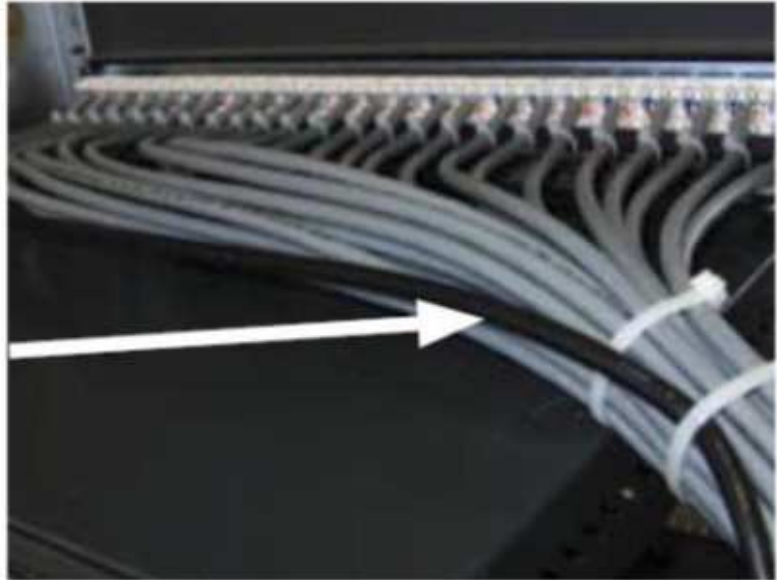


MPN NO.	SAP NO.
215-379	187000357

REVISION: <b>A1</b>	ECR/ECN INFORMATION: EC No: <b>MTS2012-0064</b> DATE: <b>2013 / 05 / 23</b>	TITLE: <b>INSTALLATION INSTRUCTIONS ON MIIM CATEGORY 6 PATCH PANEL</b>	SHEET No. <b>3 of 4</b>
DOCUMENT NUMBER: <b>AS-18700-047</b>	CREATED / REVISED BY: <b>BJ Mahendra</b>	CHECKED BY: <b>CG Raghavan</b>	APPROVED BY: <b>Samuel Huber</b>

6. Ensure scanner communications bus cable is separated from a main cable bundle.

Scanner communications bus cable is separated from main cable bundle



<b>MPN NO.</b>	<b>SAP NO.</b>
215-379	187000357

<b>REVISION:</b> <b>A1</b>	<b>ECR/ECN INFORMATION:</b> EC No: <b>MTS2012-0064</b> DATE: <b>2013 / 05 / 23</b>	<b>TITLE:</b> <b>INSTALLATION INSTRUCTIONS ON MIIM CATEGORY 6 PATCH PANEL</b>	<b>SHEET No.</b> <b>4 of 4</b>
<b>DOCUMENT NUMBER:</b> <b>AS-18700-047</b>	<b>CREATED / REVISED BY:</b> <b>BJ Mahendra</b>	<b>CHECKED BY:</b> <b>CG Raghavan</b>	<b>APPROVED BY:</b> <b>Samuel Huber</b>