



# Phy-FiXX DataLink 250 Category 6 Patch Panel

## INSTALLATION INSTRUCTIONS



**1. Cable Preparation**

1a. With the hardware kit provided, mount panel to rack so that the jack ports are facing forward and the IDC connectors are in the rear.

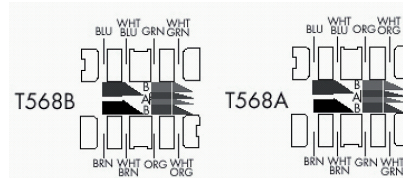
1b. Route cable along intended pathway through the frame or enclosure to the desired location on the rear-side of the panel. Allow a 6" slack or service loop at the rear of the panel. A 1.5" minimum bend radius for each port is recommended during termination and dressing of individual ports.

**2** Prepare individual 4-pair cables by stripping back insulation 50mm exposing individual wires.



**3. Cable Termination and Dressing**

3a. Beginning with jack one, terminate ports by laying the wires in the proper sequence across the contacts and by punching down with a termination tool set on low impact.



Order No.	Description
P6E-02409-1U	Phy-FiXX 24 Port RJ-45 Unshielded CATEGORY 6 1U 568A/B 19" Patch Panel

### Reference Information

#### Parts List

- Phy-FiXX DataLink 250 Category 6 Patch Panel with integral cable management shelf
- Front labeling card index strip
- International Hardware kit

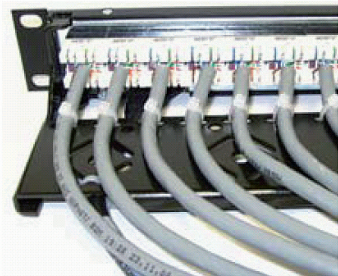
### Termination Tool

Important: Termination should be completed using a 110 termination tool. (Tool not included)

**4. Cable Dressing and Strain Relief**

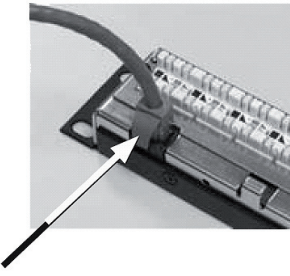
4a. Cable should be dressed from left or right on alternate panels.

4b. Dress cable on to rear cable management tray and secure each with cable tie. Do not over-compress cable



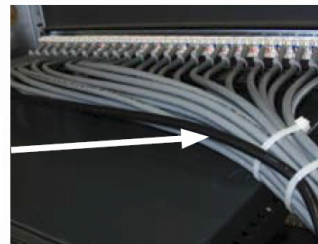
**5. Connect communications bus cable**

Connect communications bus cable to a RJ45 connector located beneath the cable tray. Secure the communications bus cable with a cable tie.



communications bus cable

**6. Ensure communications bus cable is separated from a main cable bundle.**



communications bus cable is separated from main cable bundle