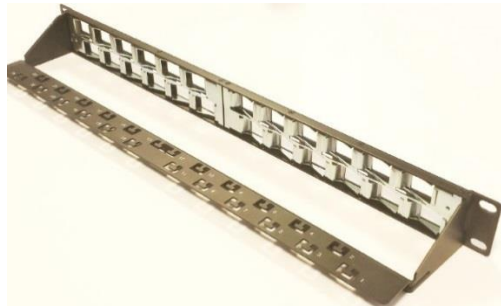


24 PORT PATCH PANEL WITH ANGLED KEYSTONE JACK APERTURES



1.0 SCOPE

This document provides installation instructions for the 24 Port Patch Panel with Angled Apertures designed to accept UTP and Shielded Keystone Jacks.

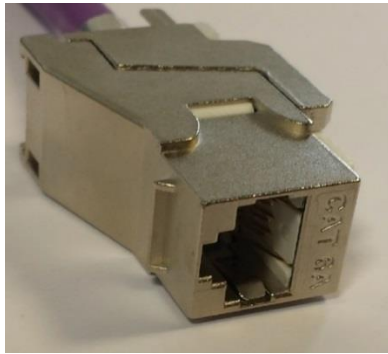
2.0 COMPATIBLE JACKS PART NUMBERS

Part Number	Description
KSJ-00078	Category 6 Shielded Keystone Jack
KSJ-00079	Category 6A Shielded Keystone Jack
KSJ-00033-0*	Category 6 UTP Keystone Jack
KSJ-00032-0*	Category 5 UTP Keystone Jack
*replace with	4 = black, 2= white

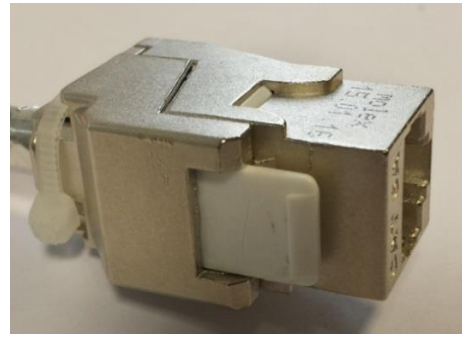
3.0 INSTALLATION PROCEDURE FOR SHIELDED JACKS

- 3.1 Terminate the Shielded Keystone Jacks by following the installation instruction guide supplied with the jack.
- 3.2 Position the jack into the angled aperture by attaching the small latch jack first and then using a flat bladed screwdriver to lever the large latch into the fully seated position. There is an audible click when the jack is properly seated

EC/ECM NO: 112214	SAP NO : 187000499	Doc No: 187000499 Doc part: AS	REV- A3
SAP EC NO: 10815316	http://www.molex.com/		DATE: 2016/FEB/03



Shielded Keystone Jack - SMALL LATCH



Shielded Keystone Jack - LARGE LATCH

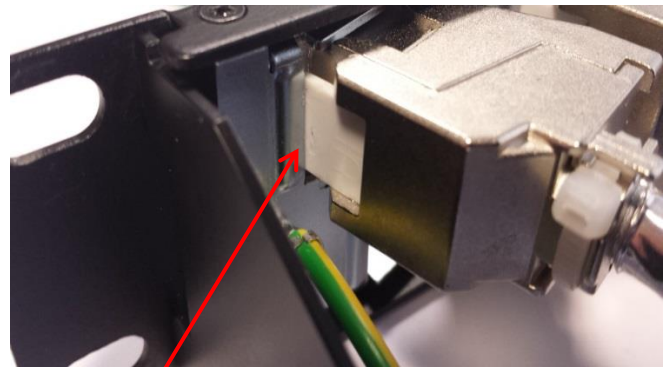
3.3 Assemble the jacks from the rear of the panel. Note that port identification numbers are marked on the rear cable management tray to assist with positioning the jacks and dressing the cables.



For port numbers 1 – 12, position the jack as shown:



1. Fit the small latch into the left of the aperture
2. Snap large latch into the right of the aperture

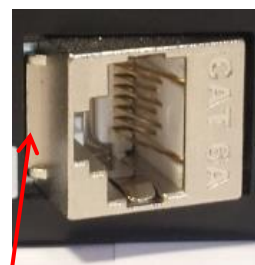


Large latch correctly positioned as seen from the rear of the patch panel.

Port Numbers 13 – 24 position the jack as shown:



1. Position small latch into the right of the aperture
2. Snap large latch into the left of the aperture panel.



Picture shows the small latch correctly positioned as seen from the front of the patch panel.

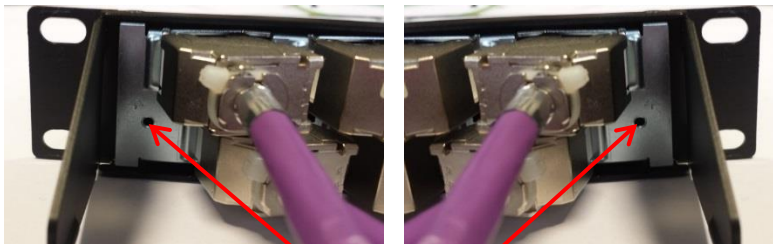


When correctly assembled the jacks in ports 1-12 are angled at 15 ° to the left. Jacks in ports 13-24 are angled 15 ° the right.

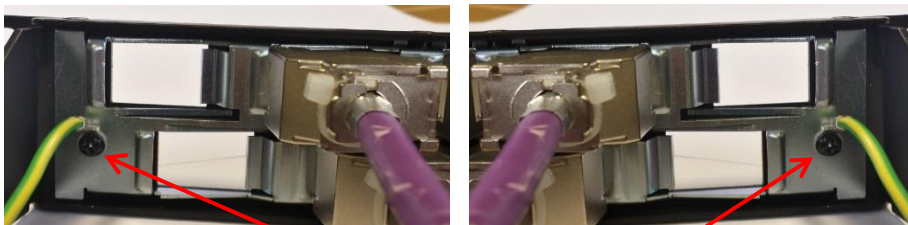
3.4 Secure the cables on the cable management tray with a cable tie, following the port position numbers as marked on the rear cable management tray.



3.5 For Shielded installations ensure that the earth cable supplied is connected to the patch panel and the rack.



Earth cable screw positions on left and right of the panel



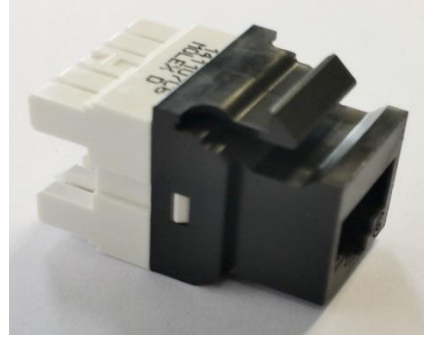
Mandatorily Earth cable screwed on left and right of the panel

4.0 INSTALLATION PROCEDURE FOR UTP KEYSTONE JACKS

- 4.1 Terminate the UTP Keystone Jacks following the installation instruction guide supplied with the jack
- 4.2 Position the jack into the angled aperture by attaching the small latch first and then using a flat bladed screwdriver lever the large latch into the fully seated position. There is an audible click when the jack is properly seated.

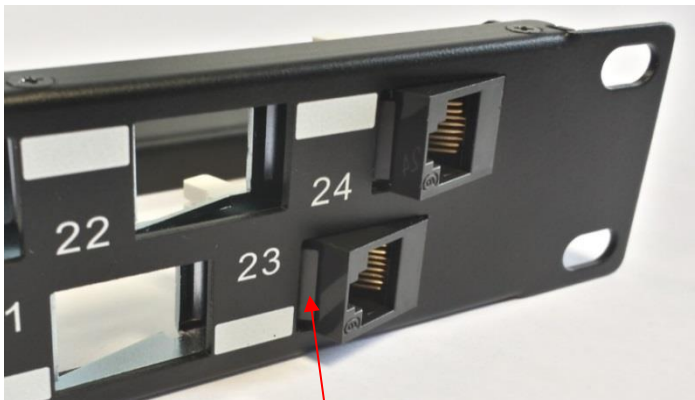


UTP Keystone Jack - SMALL LATCH

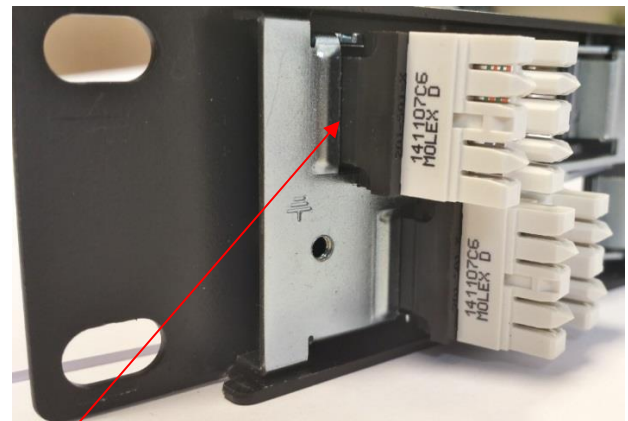


UTP Keystone Jack - LARGE LATCH

- 4.3 Assemble the jacks from the rear of the panel. Note that port identification numbers are marked on the rear cable management tray to assist with positioning the jacks and dressing the cables.
- 4.4 Follow the same procedure as shown in point 3.3 above to position the UTP jacks. When correctly assembled the jacks in ports 1-12 are angled at 15 ° to the left. Jacks in ports 13-24 are angled 15 ° the right.



Picture shows the small latch correctly positioned as seen from the front of the patch panel.



Large latch correctly positioned as seen from the rear of the patch panel.

- 4.5 Secure the cables on the cable management tray with a cable tie. Note that the port position Numbers are marked on the rear cable management tray.