



24P KYSTN PP UNLD SHLD 19" 1U WT CM



1.0 Scope

This document provides installation instruction for shielded Keystone unloaded Patch Panel.

2.0 Product Description

24 Port Keystone Unloaded, Shielded, 19" 1U Patch Panel can accommodate shielded Keystone Jacks offered by Molex Premise Networks as well as unshielded Keystone jacks. List of compatible products is given below.

KSJ-00078 Tool-less shielded C6 Keystone Module 1xRJ45 (WE8W), STP 360DEG, 568A/B, PowerCat 6

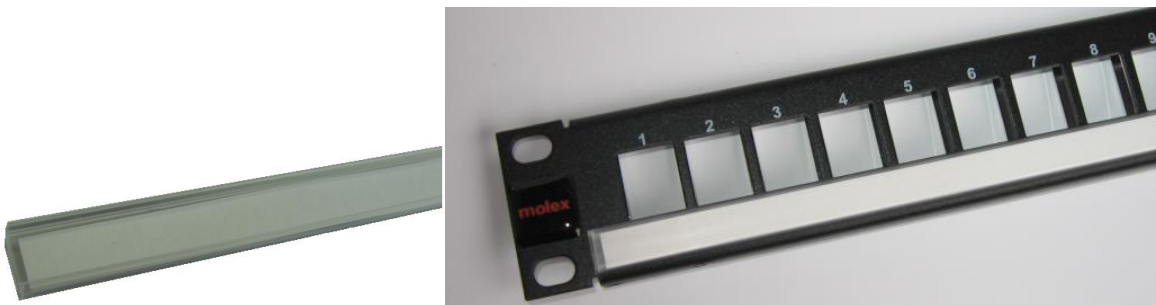
KSJ-00079 Tool-less shielded C6A Keystone Module 1xRJ45 (WE8W), STP 360DEG, 568A/B, PowerCat 6A

KSJ-00033-** Keystone Module 1xRJ45 (WE8W), UTP, 568A/B, PowerCat 6

KSJ-00032-** Keystone Module 1xRJ45 (WE8W), UTP, 568A/B, PowerCat 5e

3.0 Procedure

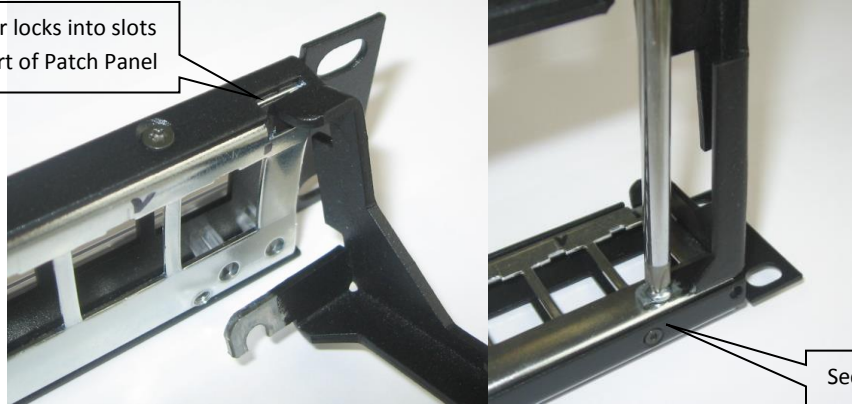
3.1 Put Paper Label in Label Holder and install Label holder on Patch Panel



EC/ECM NO: 115310	SAP NO : 187000449	Doc No: AS-18700-143 Doc part: AS	REV- A1
SAP EC NO: 10832335	http://www.molexc.com/		DATE: 2017/MAY/11

3.2 Put Cable Management Bar locks into slots located at left and right part of Patch Panel. Secure Cable Management Bar with two screws using PH2 type screwdriver.

Put Cable Management Bar locks into slots located at left and right part of Patch Panel



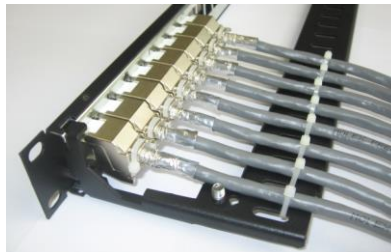
Secure Cable Management Bar with two screws

3.3 Terminate Keystone jacks on a Cable as per Termination Procedure supplied with Jack.

3.4 Install Keystone jacks into Patch Panel and secure each cable with Cable tie.



3.5 Install all jacks in the Patch Panel.



3.6 Connect earth screw with earthing system in Cabinet or Rack.

Removal procedure

Cut the Cable Tie to release cable. Use slim screw driver to push latch and remove jack from Patch Panel.

