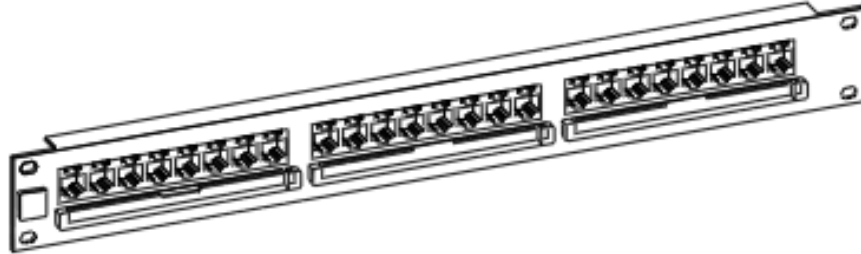


POWER CAT5E IDC PATCH PANEL 568B



1.0 SCOPE

This document provides Installation instruction of Power Cat C5E IDC Patch Panel 568B

2.0 PRODUCT DESCRIPTION

Power Cat C5E IDC Patch Panel 568B.

3.0 REFERENCE DOCUMENTS

4.0 PROCEDURE

4.1 GENERAL REQUIREMENTS

4.2 ASSEMBLY INSTRUCTIONS

4.3 REMOVAL INSTRUCTIONS

Tools required.

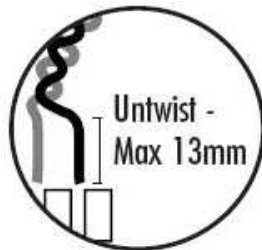
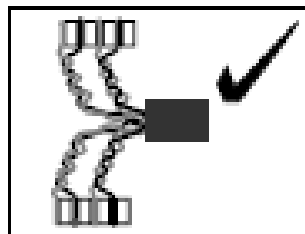
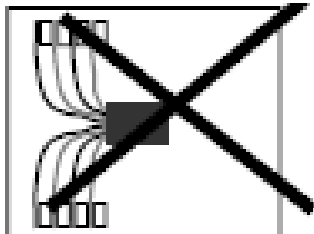
110 TERMINATION TOOL SET ON LOW IMPACT.



| MPN NO. | SAP NO. |
|---------|-----------|
| 315-201 | 187000359 |

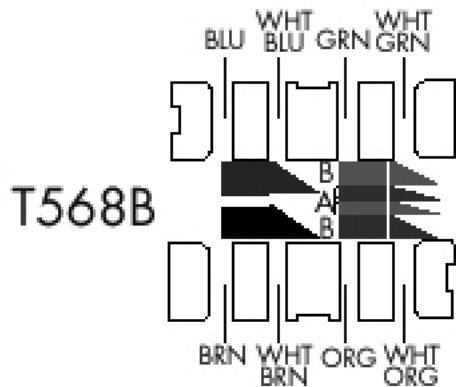
| | | | |
|-----------|---|---|------------------------------|
| 568 | ECR/ECN INFORMATION: EC No: MTS2013-0071 DATE: 2013 / 07 / 16 | TITLE: INSTALLATION INSTRUCTIN SHEET OF PAWER CAT C5E IDC PATCH PANEL 568B | SHEET No. 1 of 3 |
| A1 | DOCUMENT NUMBER: AS-18700-075 | CREATED / REVISED BY: Snagaravenka | CHECKED BY: CG, Raghavan. |
| | | APPROVED BY: Ojdana, Krzysztof | |

1. Cable preparation



CAT 5E

2. Color coding.



| | |
|---------|-----------|
| MPN NO. | SAP NO. |
| 315-201 | 187000359 |

| | | | |
|------------------|--|---|----------------------------|
| 568 A1 | ECR/ECN INFORMATION: EC No: MTS2013-0071 DATE: 2013 / 07 / 16 | TITLE: INSTALLATION INSTRUCTIN SHEET OF PAWER CAT C5E IDC PATCH PANEL 568B | SHEET No. 2 of 3 |
|------------------|--|---|----------------------------|

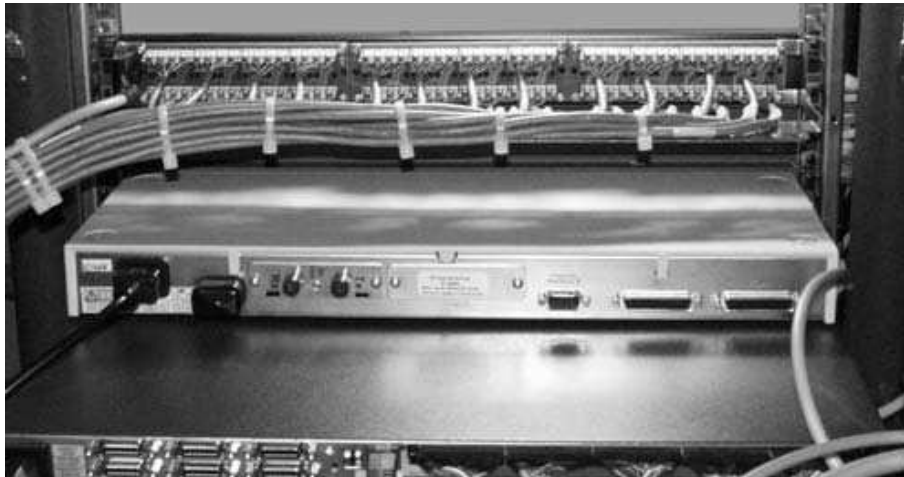
| | | | |
|---|--|-------------------------------------|--|
| DOCUMENT NUMBER: AS-18700-075 | CREATED / REVISED BY: Snagaravenka | CHECKED BY: CG, Raghavan. | APPROVED BY: Ojdana, Krzysztof |
|---|--|-------------------------------------|--|

3. Cable Dressing / Installing



Dress cable on to rear cable management tray and secure with cable ties.

4.



Cable should be dressed from left or right on alternate panels
Neaten cable ties and cable bundles

| MPN NO. | SAP NO. |
|---------|-----------|
| 315-201 | 187000359 |

| | | | |
|--|--|--|--|
| 568 A1 | <u>ECR/ECN INFORMATION:</u> <u>EC No:</u> MTS2013-0071 <u>DATE:</u> 2013 / 07 / 16 | <u>TITLE:</u> INSTALLATION INSTRUCTIN SHEET OF PAWER CAT C5E IDC PATCH PANEL 568B | <u>SHEET No.</u> 3 of 3 |
| <u>DOCUMENT NUMBER:</u> AS-18700-075 | | <u>CREATED / REVISED BY:</u> Snagaravenka | <u>CHECKED BY:</u> CG, Raghavan. |
| | | <u>APPROVED BY:</u> Ojdana, Krzysztof | |