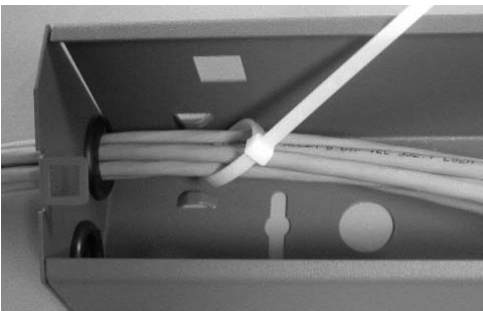


**1. Bring cable into enclosure and secure loosely with cable ties**

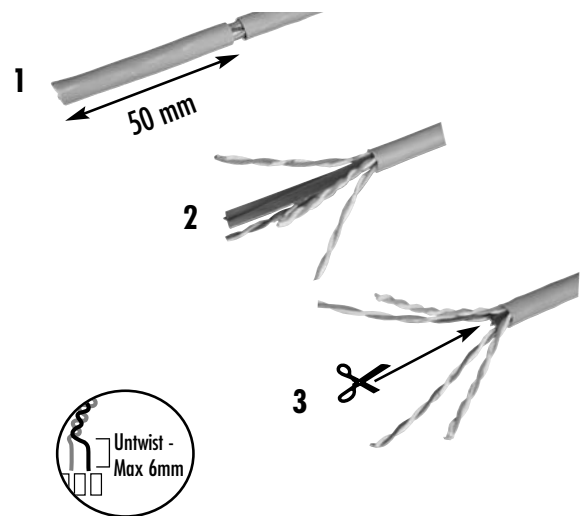


Remove modules from front plate prior to termination and feed cable through the apertures.

**2. Termination Tool**

**IMPORTANT** - Termination should be completed using a 110 termination tool, set on low impact.

**3. Cable Preparation & Termination**



**MOLEX PREMISE NETWORKS**

**Molex Premise Networks  
Corporate Headquarters**  
Tel: 1 866 733 6659  
www.molexpn.com

**European  
Headquarters**  
Tel: 44 (0) 1489 572111  
www.molexpn.co.uk

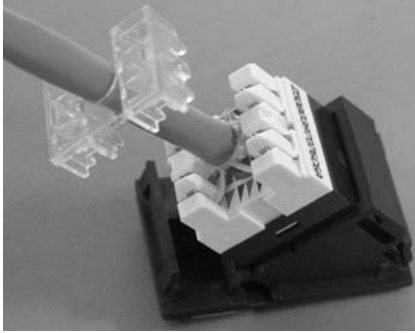
**Pac Rim  
Headquarters**  
Tel: 61 3 9971 7111  
www.molexpn.com.au

**Molex  
Incorporated**  
Tel: 630 969 4550  
www.molex.com

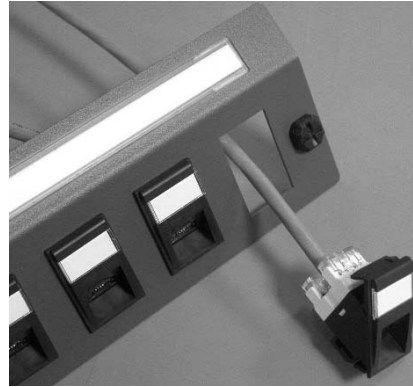


**4. Cable Strain Relief**

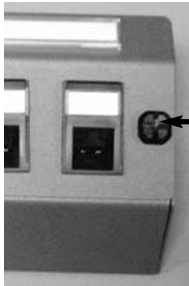
Fit cable strain relief stuffer cap ensuring the "U" shape cut-out follows the direction of the cable.



**5. Snap connectors into the plate and dress cable into the base.**

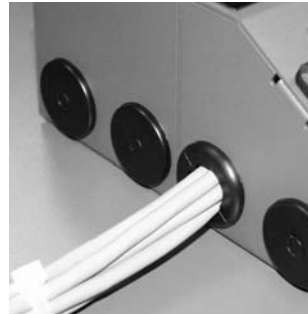


**6. Fit Cover.**



Locate the snap-fit fasteners, turn through 45° and push firmly until they snap shut.

**7. Ensure that the cable is protected by the grommets provided.**



**MOLEX PREMISE NETWORKS**

**Molex Premise Networks  
Corporate Headquarters**  
Tel: 1 866 733 6659  
www.molexpn.com

**European  
Headquarters**  
Tel: 44 (0) 1489 572111  
www.molexpn.co.uk

**Pac Rim  
Headquarters**  
Tel: 61 3 9971 7111  
www.molexpn.com.au

**Molex  
Incorporated**  
Tel: 630 969 4550  
www.molex.com