

PRODUCT AND SOLUTIONS GUIDE

CoreSync Smart Building Solution

Q2 2024



molex

Connected Buildings >



For over 30 years, Molex has specialized in developing products and solutions to enable better networks. From office spaces to production lines, data centers to multi-site campuses, your network designs will perform better and last longer with Molex technology.

Our high quality, end-to-end structured cabling solutions connect businesses with their mission critical applications.



Transforming the way global businesses approach IT infrastructure

Partner of Choice

Molex Connected Enterprise Solutions is part of the Molex group, which is a subsidiary of Koch Industries. Molex is globally recognized in a wide range of industries including data communications, consumer electronics, industrial, automotive, commercial vehicle and medical. We strive to develop the latest production techniques and manufacturing equipment to ensure consistent high-quality products and fast response to your requirements.

With design and manufacturing facilities and local teams around the world, we trade directly into more than 100 countries, providing a truly global solution.

Why Choose Molex?

Molex Accreditations

Our worldwide manufacturing sites are certified to the ISO 14001 environmental management system standard, which requires that a broad range of environmental processes and policies be in place to minimize environmental impact and maintain compliance with environmental regulations. All our products are certified to the relevant national and international standards.

25-Year Warranty

We're proud of our own manufacturing standards, as well as the quality of work provided by our global Certified Installer network. So proud in fact, that our structured cabling products enjoys a 25-year System Performance and Application Assurance Warranty. It's simple and fuss-free, providing you with the confidence, technical excellence and long-term financial security you demand for your business.

Ecocare

As a responsible corporate citizen, we are committed to using environmentally conscious practices during the design and manufacture of our products. These environmental practices are designed to ensure that Molex is developing sustainability through environmental preservation activities.

Trust, Integrity and Support

Integrity and trust are fundamental to the Molex way of life. Our Market Led Management philosophy puts you first, configuring solutions around your specific requirements. We only develop relationships with companies who demonstrate a commitment to the same exemplary standards as us. This means you can expect the highest quality of service throughout the process and for the full lifespan of your network.

CoreSync 2	8
CoreSync Powered Devices	9
CoreSync Sensors	11
CoreSync Actuators	13
CoreSync Tools and Kits	15
PoE Cabling and Connectivity - Cat5e	17
PoE Cabling and Connectivity - Cat6	19
PoE Cabling and Connectivity - Cat6A	21

Smart building solutions >

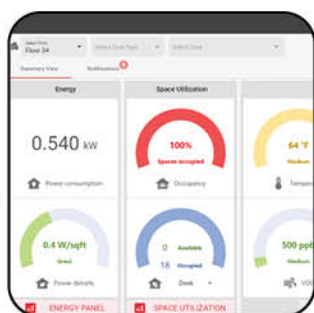


Intelligent buildings are an effective means to increase efficiency, reduce costs and improve workspace environments.

With over 3.3 million sq ft already installed, CoreSync smart building systems are already saving energy, improving workspace environments and empowering employees for businesses around the country.



CoreSync Smart Building Solution



CoreSync Dashboard

Allows for an easy and intuitive visualization of the building, its floors or zones for lighting, sensors and other building data. Features energy monitoring, device status, other KPI monitoring, real time data visualization and interactive control.



PoE Gateways

Low voltage power distribution and network connection modules. Available in single channel, 4-channel, 60W and 90W, and EnOcean.

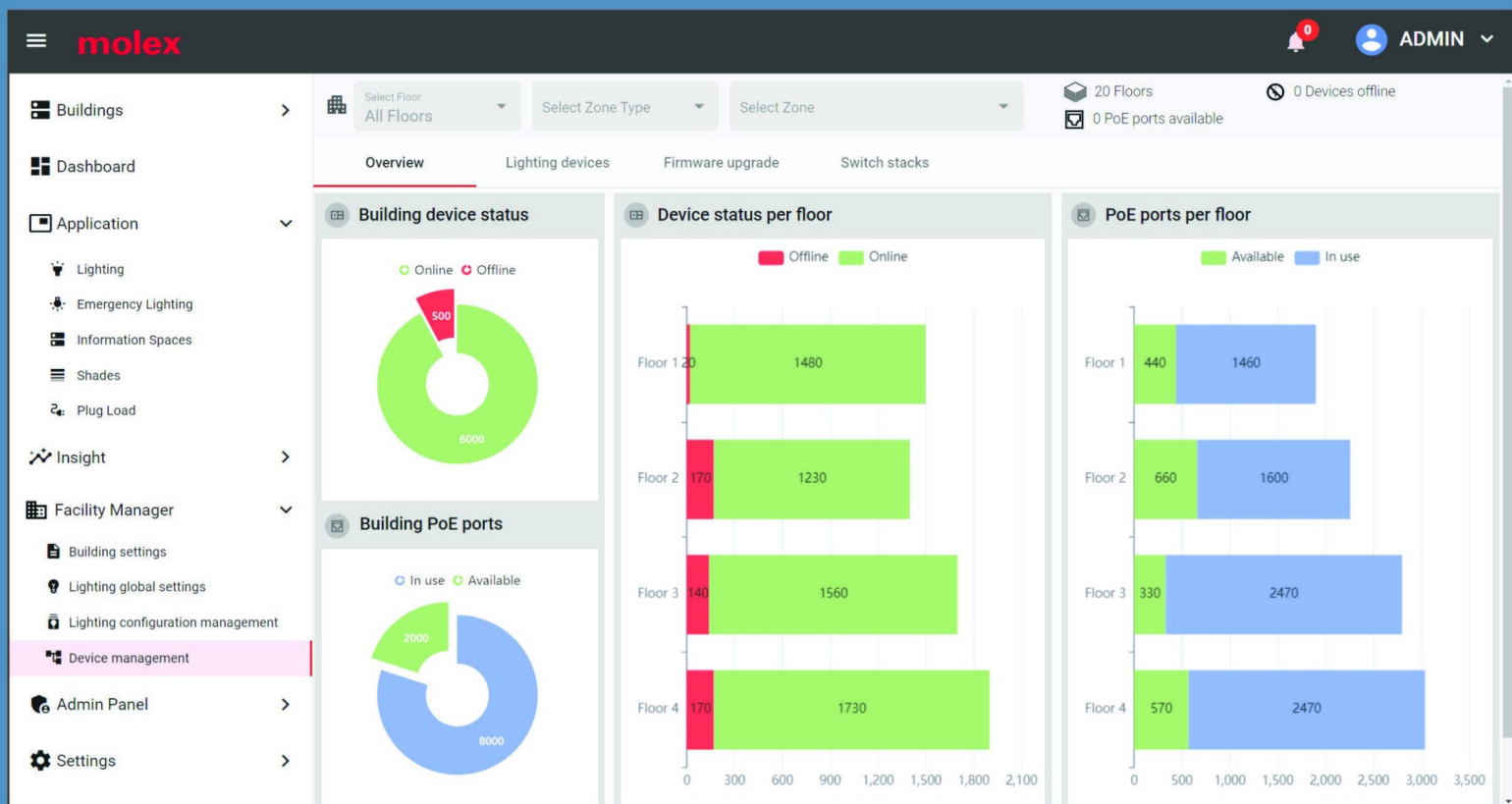


Sensors

A range of wall and ceiling mounted sensors for detection of light, temperature, occupancy, humidity and more.

CoreSync 2

Smart Building Single Pane of Glass Dashboard



The latest release of our smart building platform provides advanced integration, control and monitoring capabilities, helping you make your buildings smart in the ways that matter to you.

Advanced PoE Lighting Control

- Helps save energy with daylight harvesting and occupancy monitoring
- Provides improved occupant comfort with highly configurable and programmable light scenes and circadian lighting
- Offers granular lighting zones with real-time control and configuration of lighting parameters for each individual zone

CoreSync 2 is offered in 3 different versions:

CoreSync Basic

Control lighting and shades from a single pane of glass (SPoG) dashboard for a single building.

CoreSync Plus

Full set of control and monitoring capabilities from a SPoG dashboard for a single building, plus support for a range of optional capabilities.

CoreSync Premium

All the functionality of Plus, for multiple buildings across a campus or multiple sites. CoreSync Premium includes all available APIs to allow effortless integration with 3rd party systems out of the box.

CoreSync 2

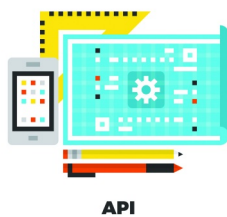


CoreSync 2.x

Molex CoreSync 2.x smart building platform streamlines building management and provides insights in health and performance of your building systems, whilst also protecting and empowering occupants.

- Manage your infrastructure seamlessly from a single dashboard across multiple buildings
- Enterprise level software platform with a microservices architecture providing scalability, load balancing and redundancy
- Role based access control, allowing granular restricting system access to authorized facility manager users
- Advanced power savings capabilities through direct interaction with the network PoE switches to automatically switch off parts of the PoE infrastructure when not in use

Order No.	Description
8600003592	CoreSync 2 Basic Perpetual License
8600003593	CoreSync 2 Plus Perpetual License
8600003594	CoreSync 2 Premium Perpetual License
8600003759	CoreSync 2 Annual Software Maintenance



CoreSync API and BACnet Gateway

CoreSync API is an add-on module used to enable integration with third party applications and Building Management Systems. CoreSync API connects three independent CoreSync managers and exposes a REST API that provides access to sensor data, properties, device status and data analytics. CoreSync BACnet gateway is a lightweight but fully featured product that provides native support for BACnet integration with any BACnet compliant BMS system based on BACnet IP protocol 12 and above. CoreSync BACnet gateway supports all functionalities of CoreSync lighting system including all lighting and sensor objects, ability to configure various types of devices, reading sensor data, modify zone settings and more.

- Sensor Data including; Ambient light, Occupancy, Temperature, Humidity & Air Quality and Power
- Properties (zone) including; Brightness, Daylight harvesting, Sensor stats, Light stats, Biodynamics and Blinds
- Device status
- Data analytics such as energy consumption and occupancy percentages
- Sensor data available through pull and pub/sub

Order No.	Description
1809875000	CoreSync API and BACnet Gateway

CoreSync Powered Devices



CoreSync Gateway 60W, Constant Voltage

The CoreSync Gateway 60W UPoE is a low-voltage power distribution and network connected module compliant with Cisco's UPOE standard that utilizes Power over Ethernet technology.

- Cisco UPoE-compliant device
- CoAP Network Communication
- Dimmable to 1% – Provides flexibility in light output
- Distributes power and data
- UL1310 – Safe operation and standard compliance
- Ample power supports multiple devices
- Rugged and robust interfaces

Order No.	Description
1809932012	CoreSync Gateway 60W UPoE, 1xCV, 24V



CoreSync Gateway 60W

The CoreSync Gateway 60W is a low voltage power distribution and network connected module that utilizes PoE (Power Over Ethernet) technology.

- Cisco UPoE compliant device
- Input power up to 60W
- CoAP network communication
- UL 2108 compliant

Order No.	Description
1809930001	CoreSync Gateway 60W UPoE, Silver Metal



CoreSync EnOcean Gateway

The CoreSync EnOcean Gateway enables remote network control of lights, sensors, local dimmers and zone controllers.

- Gateway can connect and control up to 20 devices.
- Individual Gateway's effective range is 50' (15m), covering an area of 1000 sqft with open air, line of sight
- CoAP based IP communication
- Compact size and mounting dimensions
- UL60950-1, CE, FCC

Order No.	Description
1809933001	EnOcean Gateway, 902MHz NA, White Metal
1809933002	EnOcean Gateway, 868MHz EU, White Metal



CoreSync Gateway 90W

The CoreSync Gateway 90W is a low voltage power distribution and network connected module compliant with the IEEE 802.3bt standard that utilizes enhanced 90W-per-port PoE technology.

- IEEE 802.3bt compliant device
- Input power up to 90W
- CoAP network communication
- UL 2108 listed

Order No.	Description
1807981000	CoreSync Gateway 90W 802.3bt, Silver Metal



CoreSync MechoShades Gateway

The CoreSync MechoShades Gateway allows the CoreSync system to communicate with MechoShades hubs that exist on the same IP network using a protocol translator from CoAP to MechoShades NUSPICE. MechoShades motor hubs can be installed as usual and by capturing the motor hubs ID, these hubs can be commissioned into the CoreSync platform for full control via the CoreSync dashboard.

- IEEE 802.3at and Cisco UPOE compliant device: Uses low voltage PoE infrastructure for power and communication with lights, sensors, and other devices
- MechoShades NUSPICE Translator: Communicates with MechoShades hubs for shade applications
- CoAP network communication: Easy and secure convergence of IP infrastructure
- UL 2108 listed: Safe operation and industry standard compliance

Order No.	Description
1809931001	CoreSync MechoShades Gateway

CoreSync Powered Devices

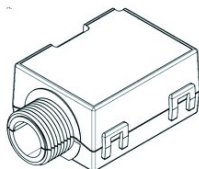


CoreSync MultiGate 90W

The CoreSync PoE MultiGate 2.0 is a low voltage power distribution and network connected module compliant with IEEE802.3bt standard that utilizes enhanced 90W-per-port PoE technology and lets you combine the power of 12 PoE Gateways in a single 1U package. The PoE MultiGate2.0 provides a minimum guaranteed and usable 71.3 watts of power per port for 12 ports and, control and secure 2-way communication with lights and other devices in a CoreSync-enabled building infrastructure.

- IEEE 802.3bt compliant device
- Twelve PoE 90W Gateway ports
- CoAP network communication
- Daisy chain capable, easy connection to all CoreSync devices
- UL 2108 compliant
- Standard 1U configuration
- Replaceable Gateways

Order No.	Description
1808282000	CoreSync MultiGate, 90W



EnOcean Wireless 20A Relay

The EnOcean Wireless 20A Relay uses wireless technology to communicate with other wireless, self-powered components. The compact size enables flexible installation inside of or next to electrical boxes and fixtures so the EnOcean Wireless 20A Relay can be easily wired out of sight using standard wiring practices. This device may be linked directly to other CoreSync wireless devices. Pair to the CoreSync EnOcean Wireless Gateway for full integration with control and monitoring from the CoreSync system.

- CoreSync Interoperable
- Supports California Title 24 daylight harvesting scenarios
- 120-277VAC voltage range
- Daisy Chain capability
- Compact size
- Surge protection
- Plug Load Application

Order No.	Description
180997-0009	EnOcean Wireless 20A Relay 902MHz
180997-0109	EnOcean Wireless 20A Relay 868MHz

CoreSync Sensors



CoreSync Fixture Sensor, Standard

The CoreSync Fixture Sensor, Standard enables lighting manufacturers to deliver PoE fixtures that incorporate fully network-connected sensing. Featuring digital PIR for accurate occupancy detection, plus ambient light, temperature and humidity sensing. The compact, PoE-powered Sensor also offers two-way communication, providing useful data for lighting automation and building management systems.

- PoE-network enabled
- Highly accurate occupancy sensing
- Ambient light sensing
- Temperature and humidity sensing
- Accurate local sensing and reporting
- Individualized sensing

Order No.	Description
1820911000	CoreSync PoE Fixture-Mounted Sensor R



CoreSync Fixture Sensor, Highbay

The CoreSync Fixture Sensor, Highbay enables fully network connected sensing in a powered PoE fixture or mounted in a ceiling aperture. The Sensor C also features two-way communication with control software, providing useful data for lighting automation and building management.

- PoE-network enabled
- Highly accurate occupancy sensing
- Ambient light sensing
- Temperature and humidity sensing
- Accurate local sensing and reporting
- Individualized sensing

Order No.	Description
1820901000	CoreSync Fixture Sensor, Highbay, White



CoreSync EnOcean Occupancy Sensor, Wall Mount

The CoreSync EnOcean Occupancy Sensor Wall Mount harvests solar energy from indoor light and uses radio frequency technology to communicate wirelessly with other EnOcean-enabled devices, helping building automation systems to reset temperature, turn off lights and control other electrical loads upon detecting that a space has been unoccupied for a set period of time.

- Wireless, interoperable – Communicates with other CoreSync devices and Network Connected Lighting system
- Self-powered – Needs no wiring or battery support in a light harvesting environment
- PIR motion sensor with 360° viewing angle

Order No.	Description
1809970005	EnOcean Occupancy Sensor, Wall Mount- 902MHz NA
1809970105	EnOcean Occupancy Sensor Wall Mount, 868MHz EU



CoreSync EnOcean Ambient Light Sensor

The CoreSync EnOcean Ambient Light Sensor measures and reports the level of available natural light, enabling energy-saving daylight harvesting capabilities when used within the CoreSync Network Connected Lighting System.

- Interoperable – Fully compatible with other CoreSync and EnOcean enabled wireless devices
- Communicates wirelessly with other CoreSync devices and CoreSync Network Connected Lighting System
- Powered by solar energy – No wiring or battery scheme needed
- Mounts on any ceiling material – Easy, fast installation

Order No.	Description
1809970006	EnOcean Ambient Light Sensor, 902MHz NA
1809970106	EnOcean Ambient Light Sensor, 868MHz EU



CoreSync EnOcean Occupancy Sensor, Ceiling Mount

The CoreSync EnOcean Occupancy Sensor Ceiling Mount harvests solar energy from indoor light and uses radio frequency technology to communicate wirelessly with other CoreSync devices, helping building automation systems to reset temperature, turn off lights and control other electrical loads upon detecting that a space has been unoccupied for a set period of time.

- Wireless, interoperable – Communicates with other CoreSync devices and Network Connected Lighting System
- Self-powered – Needs no wiring or battery support in a light harvesting environment
- PIR motion sensor with 360° viewing angle
- Internal tray – Provides power from supplemental coin battery

Order No.	Description
1809970004	EnOcean Occupancy Sensor, Ceiling Mount - 902MHz NA
1809970104	EnOcean Occupancy Sensor, Ceiling Mount- 868MHz EU

CoreSync Sensors



CoreSync EnOcean Temperature/Humidity Sensor

The CoreSync EnOcean Temperature/Humidity Sensor is powered by a solar cell and features on-board energy storage that allows operation for days even in total darkness, with socket for optional coin cell battery backup for use in very low light environments. The slim housing can be easily mounted vertically on walls, using the enclosed 2-sided adhesive tape.

- Self-powered
- Provides frequent “signs of life” updates
- Individualized sensing
- Connects wirelessly with the CoreSync EnOcean Gateway

Order No.	Description
1809970007	EnOcean Temp/Humidity Sensor, 902MHz NA



CoreSync Advanced Lighting Sensor

The CoreSync Advanced Lighting Sensor is a low voltage sensor platform leveraging network connected Molex CoreSync infrastructure for digital building applications. Occupancy and ambient light data can be granularly collected by Molex sensor array and transferred to BMS, 3rd-party systems or cloud platforms for augmented building control and automation, as well as advanced reporting/analytics. The full RGB ring indicator can support software-driven use-cases such as presence-based occupancy, wayfinding, and room reservation status.

- PIR (passive infrared)
- Ambient light sensing
- RGB indicator
- Daisy-chain capability
- Easy to install, power, connect
- Ceiling tile or surface bracket

Order No.	Description
1820892000	CoreSync Advanced Lighting Sensor, Std White



CoreSync Advanced Environmental Sensor

The Advanced Environmental Sensor is a low voltage sensor platform leveraging network connected Molex CoreSync infrastructure for digital building applications. VOC (volatile organic compounds), temperature, and humidity data granularly collected by Molex sensor array can be transferred to BMS and/or other 3rd-party systems or a cloud platform for augmented building control and automation as well as advanced reporting and analytics.

- Air quality/VOC
- Temperature
- Humidity
- Easy to install, power, connect
- Ceiling tile or surface bracket

Order No.	Description
1820893000	CoreSync Advanced Environmental Sensor (White)

CoreSync Actuators



CoreSync Emergency Lighting Bypass

In the event of an emergency, such as power failure, PoE power source failure, disconnection of cabling, the CoreSync Emergency Lighting Bypass will bypass normal PoE control and activate the emergency power source and onboard LED driver. The fixture will be powered to full brightness irrespective of previous state/control. Once the emergency condition is over, the lighting system will resume normal operation.

- CoreSync daisy-chain compatible
- Available in a range of power outputs
- Powered by building emergency source
- UL 924, CSA C22.2 No 141, FCC Class B
- NFPA (NEC, Life Safety Code) IBC

Order No.	Description
Dual Channel	
1821351211	CoreSync Emergency Lighting Bypass, 350D
1821351212	CoreSync Emergency Lighting Bypass, 500D
1821351213	CoreSync Emergency Lighting Bypass, 700D
1821351216	CoreSync Emergency Lighting Bypass, 880D
1821351214	CoreSync Emergency Lighting Bypass 1050D
Single Channel	
1821351201	CoreSync Emergency Lighting Bypass, 350S
1821351202	CoreSync Emergency Lighting Bypass, 500S
1821351203	CoreSync Emergency Lighting Bypass, 700S
1821351206	CoreSync Emergency Lighting Bypass, 880S
1821351204	CoreSync Emergency Lighting Bypass 1050S
Module	
1821350002	CoreSync Emergency Lighting Module, 350D
1821350003	CoreSync Emergency Lighting Module, 500D
1821350004	CoreSync Emergency Lighting Module, 700D
1821350006	CoreSync Emergency Lighting Module, 880D
1821350005	CoreSync Emergency Lighting Module 1050D



CoreSync Compact Driver

The CoreSync Compact Driver is a compact low voltage, DC/DC LED driver that can be programmed to specific power outputs, for driving Constant Current LED engines in a wide variety of light fixtures. The Drivers are powered and controlled by a Molex CoreSync PoE Gateway. The CoreSync Compact Driver can be embedded in a fixture or placed remotely. The Driver is connected to the CoreSync PoE Gateway using rugged and reliable Molex Micro-Fit connectors.

- Integrated Power Monitoring
- On-board thermistor
- Individually addressable
- Optimized for tunable white LED engines

Order No.	Description
Single	
1809965107	CoreSync Compact Driver, Single, 300mA
1809965101	CoreSync Compact Driver, Single, 350mA
1809965102	CoreSync Compact Driver, Single, 500mA
1809965103	CoreSync Compact Driver, Single, 700mA
1809965106	CoreSync Compact Driver, Single, 880mA
1809965104	CoreSync Compact Driver, Single, 1050mA
1809965108	CoreSync Compact High Current Driver, Single, 1200mA
1809965109	CoreSync Compact High Current Driver, Single, 1400mA
Dual	
1809966107	CoreSync Compact Driver, Dual, 300mA
1809966101	CoreSync Compact Driver, Dual, 350mA
1809966102	CoreSync Compact Driver, Dual, 500mA
1809966103	CoreSync Compact Driver, Dual, 700mA
1809966106	CoreSync Compact Driver, Dual, 880mA
1809966104	CoreSync Compact Driver, Dual, 1050mA
1809966108	CoreSync Compact High Current Driver, Dual, 1200mA
1809966109	CoreSync Compact High Current Driver, Dual, 1400mA

* Programmable in 10mA increments, using CoreSync Programming Kit No. 180788-1000.



CoreSync Advanced RGBW Indicator

The CoreSync Advanced RGBW Indicator is powered and connected by the Molex CoreSync low-voltage PoE network infrastructure and can be easily integrated with BMS and other 3rd-party systems such as lighting, access control, AV, scheduling, fire, mass notification, emergency etc., for augmented building control and automation. The RGBW LED supports software-driven use cases such as presence-based occupancy status and can be used to create pathways and event status notification to the end user.

- Low voltage PoE infrastructure for power, control and communication
- Calculates valuable energy-use information
- Allows easy discovery, commissioning and control of each sensor
- Daisy chain capable, easy connection to all CoreSync Devices
- 1-100% PWM with 16 million different colors
- Comes with two mounting styles for near universal mounting locations

Order No.	Description
1820891000	CoreSync Advanced RGBW Indicator, White

CoreSync Actuators



2x2 LED Troffer Series

Designed to reduce installation costs, help achieve energy-saving objectives and provide a pleasant lighting experience for end users. Together with the latest LEDs, industry-standard network switches and CoreSync control software managing PoE Gateways, LED Smart Drivers and an array of sensor options, the CoreSync 2x2 Troffer delivers an easy-to-apply lighting solution for new construction or retrofit applications.

- PoE-powered and controlled
- Removable Smart Lighting Element – Creates unique scenes and biorhythmic lighting sequences
- Integrated sensors: ambient light, occupancy, color temperature and power metering; optional air quality
- Indicator RGBW LEDs – for live alerts, indications, directions, occupancy status.
- Class 2 rated electronic device – Safe, easy access and long life

Order No.	Description
1820560000	CoreSync 2x2 Troffer, ADJ CCT - MAIN HSG

CoreSync Tools and Kits



Smart LED Driver
Page 13

CoreSync PoE Fixture-Mounted Sensor R
Page 11

CoreSync PoE Multi-Mount Sensor C
Page 11



CoreSync Fixture Manufacturer Kit

The CoreSync Fixture Manufacturer Kit is a portable solution for testing and validating CoreSync-Ready light fixtures having integrated Drivers and Sensors, automating the end of line testing process. The Fixture Manufacturer Kit is a self-enclosed kit designed to validate a light fixture with CoreSync components integrated. The tester connects to both the input and output ports on any CoreSync-enabled light fixture. The Tester is an all-in-one solution, and the automated test can be used on fixtures with multiple Drivers, color tuning capabilities, and integrated CoreSync Sensors. Additionally, the Tester automatically steps through different brightness and color commands, allowing the operator to visually inspect the light output and confirm everything has been wired correctly inside the fixture.

- CoreSync Enabled
- Easy integration with Molex CoreSync devices
- Dual CoreSync IO connectors
- Quick and easy connection to all CoreSync Devices
- Hot Plug Prevention
- Momentary ON push button allows for automatic shut off when released
- Integrated RGBW Indicator
- Visual indicator showing the end of the test sequence
- Power LED
- Allows user to identify if test is currently running

Order No.	Description
180788-2000	CoreSync Fixture Manufacturer Kit

CoreSync Field Tester Kit

The CoreSync Field Tester Kit allows for a quick validation of daisy-chain branches after the CoreSync System has been installed. By connecting to the first device of a CoreSync daisy-chain, the Field Tester Kit will allow each device to blink sequentially depending on its location in the daisy-chain. The Field Tester Kit powers all devices on the daisy-chain using an AC connection. The first device will blink once, second device will blink twice, etc. until all devices have seen their turn. Once the cycle has been completed, the cycle will begin again at the first CoreSync daisy-chain device.

- CoreSync Enabled - Easy integration with Molex CoreSync devices
- CoreSync Bundle - All in one solution with added accessories for full testing
- Interior Foam - Foam lining for safe protection of equipment stored
- Integrated Handle - Allows easy carry and movement of kit
- CoreSync Output Connector - Quick and easy connection to all CoreSync Devices
- Polypropylene Copolymer Case - Robust housing perfect for heavy duty environments

Order No.	Description
180788-3000	CoreSync Field Tester Kit

CoreSync Driver Programmer Kit

The CoreSync Driver Programmer Kit allows the user to program the output current and type of our LED Drivers. All CoreSync Drivers can be programmed down by 10mA increments for granular output current. Operator will use a mouse to navigate a user interface connected via HDMI to a monitor in order to configure the LED Driver parameters. 5V supplies enough power to programmer microcontroller while preventing hot plug damage while switching between drivers.

- Easy integration with Molex CoreSync devices
- Quick and easy connection to all CoreSync Devices
- 5V output prevents damage from hot plugging
- User interface displayed on connected monitor via HDMI
- UI navigation with mouse and keyboard

Order No.	Description
180788-1000	CoreSync Driver Programmer Kit

POWER OVER ETHERNET > CABLING & CONNECTIVITY

Our PowerCat range of PoE products delivers speed, safety and reliability for all your smart building connectivity needs.

This catalogue highlights only our most commonly used cabling products. Our full range is available on molexces.com.

Which Category do I Need?

The majority of CoreSync applications are low voltage for which Cat 5e or Cat 6 systems are suitable. However, higher Categories of twisted-pair cabling offer superior data transmission, power handling, and protection from interference.

PoE cabling recommendations:

Cable series	Category	AWG	Max Power	Application
CAA-0184P- **	5e	24	Up to 60W	CoreSync
CAA-0181P- **	6	23	Up to 90W	Dependent on end device bandwidth requirements
CAA-0320P-**	6A	23	Up to 90W	IT Infrastructure

For the full PowerCat range visit molexces.com/products/copper/.

Shielded vs Unshielded

Molex provides a full range of shielded and unshielded PoE options, from Cat 5e to Cat 6A. We recommend shielding to protect against EMI and interference, but also to control temperature buildup.

Cable Gauges

Cables and patch cords are available in a range of gauges from 22AWG to 28AWG to suit every environment. For CoreSync applications 23AWG or better are recommended. Please note there are additional system design guidelines for using 28AWG patch cords for PoE - refer to the PoE calculator for more information.

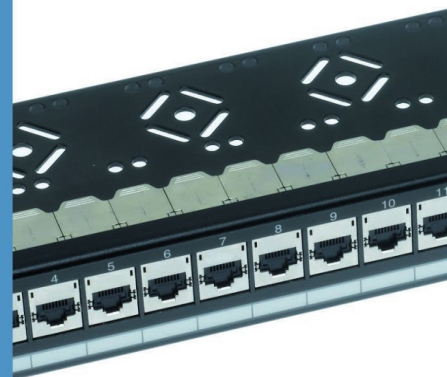
Free PoE Calculator

Our free PoE Calculator tool will help you work out which cable type you need, as well as highlighting any potential problems with your system design. Visit csp.molex.com to download the latest version.

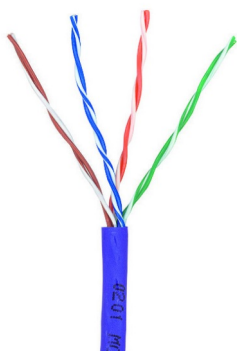
Environment Specific Products

We also offer cabling products designed for specific environments, such as IP65- and IP67-rated cables for outdoor or other harsh environments, and cabling products with an antimicrobial coating for use in healthcare environments.

For full details of all our products, including data center solutions, fiber optics, and cable management solutions, download a catalogue from molexces.com/resources/literature



PoE Cabling and Connectivity - Cat5e



PowerCat 5e U/UTP Cable

The PowerCat Cat 5e U/UTP cable is designed to support ultra high speed data networks such as Gigabit Ethernet (1000 Base-T) and features color coded pairs for ease of termination.

- 4 pair LS0H and PVC Cable
- Available in 305m pull boxes
- Available in blue and gray sheaths for application versatility

Order No.	SAP No.	Description
CAA-0184P-02	181700047	PowerCat 5e 4 Pair Cable, Plenum, 1000 ft Box - White
CAA-0184P-08	181700048	PowerCat 5e 4 Pair Cable, Plenum, 1000 ft Box - Light Gray
CAA-0184P-BL	181700046	PowerCat 5e 4 Pair Cable, Plenum, 1000 ft Box - Blue
CAA-0184R-02	181700044	PowerCat 5e 4 Pair Cable, Riser, 1000 ft Box - White
CAA-0184R-08	181700045	PowerCat 5e 4 Pair Cable, Riser, 1000 ft Box - Light Gray
CAA-0184R-BL	181700043	PowerCat 5e 4 Pair Cable, Riser, 1000 ft Box - Blue



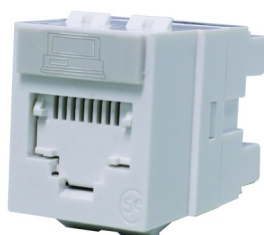
PowerCat DataGate Patch Panel

PowerCat Category 5e DataGate Panels feature the shuttered DataGate connector. These panels come with integral rear cable management trays and are available in 24 and 48 port versions. Individual ports can be color coded using an icon for site-specific network administration.

- 19" Shuttered DataGate Category 5e Panel
- EIA 568A/B color coded
- Integral cable management tray
- Graphite gray finish

Order No.	SAP No.	Description
PID-00174	181060023	PowerCat 5e 24 Port DataGate Patch Panel RJ45 568A/B UTP - 1U
PID-00175	181060024	PowerCat 5e 48 Port DataGate Patch Panel RJ45 568A/B UTP - 2U
Accessories		
CSP-00021-**	Consult Molex	Blank Connector Icon Labels 6-Pack (Bag of 10)
CSP-00022-**	Consult Molex	Data Connector Icon Labels 6-Pack (Bag of 10)
CSP-00023-**	Consult Molex	Voice Connector Icon Labels 6-Pack (Bag of 10)

** Color Options - 01 = Almond, 02 = White, 04 = Black, 05 = Ivory, 08 = Light Gray, RD = Red, BL = Blue, GR = Green, YL = Yellow, RG = Orange, PP = Purple



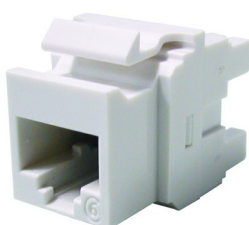
PowerCat DataGate Jacks

The DataGate jack is designed to maintain clean secure connections. The RJ45 jack features a patented 'spring-loaded shutter' which protects it from dust and contaminants as well as providing tactile feedback. The spring-loaded shutter pops out an improperly seated patch cord, all with single-handed plug-in and removal. Available in eleven colors the DataGate jack utilize patented IDC V-shaped contacts that flex not fatigue when terminated and provides molded category identification on jack face as well as optional port identification icons.

- Integral 'spring-loaded' shutter that prevents incomplete mating
- IDC contacts that flex not fatigue when terminated
- Pointed IDC towers to speed termination and enhance cable retention
- 568A/B wiring configuration
- Allows rear and side entry cable termination
- Designed for use with Molex's Synergy, Streamline & USO II system of wallplates and surface blocks Compatible with Molex Unloaded DataGate Patch Panels

Order No.	SAP No.	Description
KSJ-00024-**	Consult Molex	PowerCat 5e DataGate Jack, 568A/B - Shuttered

** Color Options - 01 = Almond, 02 = White, 04 = Black, 05 = Ivory, 08 = Light Gray, RD = Red, BL = Blue, GR = Green, YL = Yellow, RG = Orange, PP = Purple. Standard Stocked Colors - Black and White. All colors may be subject to availability and variable pricing.



PowerCat 5e UTP Keystone Jack

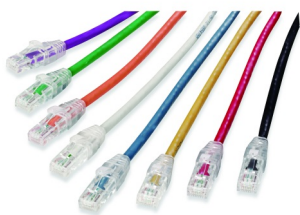
Utilizing patented IDC V-shaped contacts that flex not fatigue when terminated, the RJ45 Keystone Jack is compatible with any product that accepts the standard keystone profile.

- Dual color coding allows 568A/B wiring
- Patented IDC V-Shaped contacts that flex not fatigue when terminated
- Features pointed IDC towers to speed termination and enhance cable retention
- Molded category identification on jack face

Order No.	SAP No.	Description
KSJ-00032-**	Consult Molex	Keystone Jack, Category 5e, 8W, 568A/B

** Color Options - 01 = Almond, 02 = White, 04 = Black, 05 = Ivory, 08 = Light Gray, RD = Red, BL = Blue, GR = Green, YL = Yellow, RG = Orange, PP = Purple. Standard stocked color - White. All colors may be subject to availability and variable pricing.

PoE Cabling and Connectivity - Cat5e



PowerCat 5e UTP Patch Cords

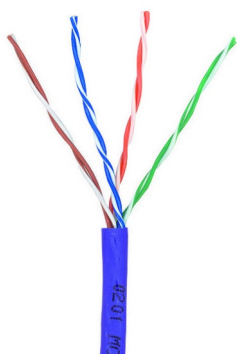
Molex PowerCat 5e U/UTP Patch Cords are key components of PowerCat 5e U/UTP End-to-End Solution. PowerCat Patch Cords were designed to support data networks for 10/100BASE-T and 1000BASE-T applications. The patch cable is made from high quality 4 pair 24 AWG stranded copper wire. Available in a range of colors and lengths, PowerCat 5e patch cords are pre-terminated with RJ45 plugs and feature anti-snap slim strain relief slip on boots.

- 4 pair 24 AWG stranded wire
- Pre-terminated with WE8W plugs
- Slim clear anti-snap slip on boots
- Suitable for EIA 568A or 568B wiring applications
- PVC sheath

Order No.	SAP No.	Description
PCD-01F03-**-	Consult Molex	PowerCat 5e U/UTP Patch Cord PVC - 3 ft
PCD-01F05-**-	Consult Molex	PowerCat 5e U/UTP Patch Cord PVC - 5 ft
PCD-01F07-**-	Consult Molex	PowerCat 5e U/UTP Patch Cord PVC - 7 ft
PCD-01F10-**-	Consult Molex	PowerCat 5e U/UTP Patch Cord PVC - 10 ft

Note: Other lengths are available, please contact Molex ** Color Options - 0C = Red, 0E = Gray, 0H = Blue, 0J = Green, 0K = Yellow, 0W = White, 0P = Purple, 0N = Orange, BK = Black

PoE Cabling and Connectivity - Cat6



PowerCat 6 U/UTP Cable

The Molex PowerCat 6 U/UTP cable supports high speed data networks such as Gigabit Ethernet (1000 Base-T/1000 Base-TX) and beyond. Pair twisting ensures optimum Return Loss and NEXT performance and maintains pair twist rate during installation. Cat 6 U/UTP cable incorporates central cross member maintaining pair separation during installation to ensure premium performance after installation.

- Supplied in convenient 1000ft or 3000ft reel in a box
- 23 AWG Conductors for improved Insertion Loss Performance
- Plenum and riser
- Foot length markers
- Splinesless for quicker installation

Order No.	SAP No.	Description
Plenum		
CAA-0195P-BL	181740023	PowerCat 6 U/UTP 4 Pair Cable, CMP Plenum, PVC Alloy, 1000ft Reel in a box - Blue
CAA-0195P-02	181740024	PowerCat 6 U/UTP 4 Pair Cable, CMP Plenum, PVC Alloy, 1000ft Reel in a box - White
CAA-0195P-08	181740025	PowerCat 6 U/UTP 4 Pair Cable, CMP Plenum, PVC Alloy, 1000ft Reel in a box - Light Gray
CAA-0195P-GR	181740031	PowerCat 6 U/UTP 4 Pair Cable, CMP Plenum, PVC Alloy, 1000ft Reel in a box - Green
CAA-0195P-YL	181740030	PowerCat 6 U/UTP 4 Pair Cable, CMP Plenum, PVC Alloy, 1000ft Reel in a box - Yellow
CAA0195P-3KBL	181740029	PowerCat 6 U/UTP 4 Pair Cable, CMP Plenum, PVC Alloy, 3000ft Reel - Blue
Riser		
CAA-0195R-BL	181740026	PowerCat 6 U/UTP Cable, 4 Pair, CMR Riser, PVC, 1000ft Reel in a box - Blue
CAA-0195R-02	181740027	PowerCat 6 U/UTP Cable, 4 Pair, CMR Riser, PVC, 1000ft Reel in a box - White
CAA-0195R-08	181740028	PowerCat 6 U/UTP Cable, 4 Pair, CMR Riser, PVC, 1000ft Reel in a box - Gray
CAA-0195R-GR	181740034	PowerCat 6 U/UTP Cable, 4 Pair, CMR Riser, PVC, 1000ft Reel in a box - Green
CAA-0195R-YL	181740033	PowerCat 6 U/UTP Cable, 4 Pair, CMR Riser, PVC, 1000ft Reel in a box - Yellow



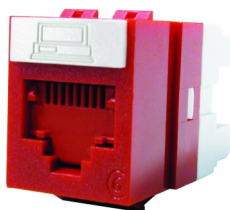
PowerCat 6 Patch Panels, Loaded

PowerCat 6 Patch Panels feature the shuttered DataGate Connector which is dual color coded for either 568A or 568B wiring. The panels come complete with an integral cable management tray for cable strain relief and tidy cable dressing. Available in 24 or 48 port versions, with front and rear port labeling. Individual ports can be color coded using an icon for site-specific network administration.

- Shuttered DataGate RJ45
- 24 Port 1U, 48 Port 2U
- EIA 568A/B color coded
- Integral rear cable management tray
- Standard 19" rack mount
- Graphite Gray finish

Order No.	SAP No.	Description
PID-00141	182090036	PowerCat 6 24 Port Loaded Patch Panel, RJ45 568A/B UTP - 1U - Graphite
PID-00142	182090037	PowerCat 6 48 Port Patch Loaded Panel, RJ45 568A/B UTP - 2U - Graphite
Accessories		
CSP-00021-**	Consult Molex	Blank Connector Icon Labels 6-Pack (Bag of 10)
CSP-00022-**	Consult Molex	Data Connector Icon Labels 6-Pack (Bag of 10)
CSP-00023-**	Consult Molex	Voice Connector Icon Labels 6-Pack (Bag of 10)

**Color Options - 01 = Almond, 02 = White, 04 = Black, 05 = Ivory, 08 = Light Gray, RD = Red, BL = Blue, GR = Green, YL = Yellow, RG = Orange, PP = Purple



PowerCat 6 UTP DataGate Jack

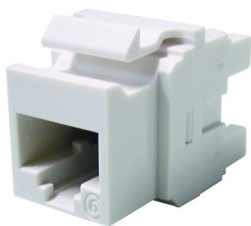
The DataGate Jack is the cornerstone of the Molex CES PowerCat 6 System performance. This jack features a unique spring-loaded shutter that not only protects it from dust and contaminants, but the ingenious spring-loaded design also ejects improperly seated patch cords. The product is dual color coded for either 568A or 568B wiring schedules and is backwards compatible with C5e systems.

- Dual color coding allows 568A/B wiring
- Patented IDC V-Shaped contacts that flex not fatigue when terminated
- Patented spring-loaded shutter
- Accepts color coded port identification labels
- Molex 4 Pair Termination Tool or industry standard 110 termination tool compatible

Order No.	SAP No.	Description
KSJ-00018-**	Consult Molex	PowerCat 6 DataGate Jack, 568A/B
Accessories		
CSP-00021-**	Consult Molex	Blank Connector Icon Labels 6-Pack (Bag of 10)
CSP-00022-**	Consult Molex	Data Connector Icon Labels 6-Pack (Bag of 10)
CSP-00023-**	Consult Molex	Voice Connector Icon Labels 6-Pack (Bag of 10)

** Color Options - 01 = Almond, 02 = White, 04 = Black, 05 = Ivory, 08 = Light Gray, RD = Red, BL = Blue, GR = Green, YL = Yellow, RG = Orange, PP = Purple. Standard stocked colors - Black and White. All colors subject to availability and variable pricing.

PoE Cabling and Connectivity - Cat6



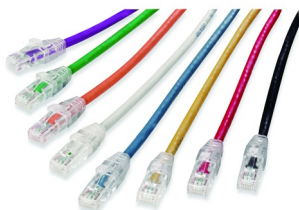
PowerCat 6 UTP Keystone Jack

Utilizing patented IDC V-shaped contacts that flex not fatigue when terminated, the RJ45 Keystone Jack is compatible with any product that accepts the standard keystone profile.

- Dual color coding allows 568A/B wiring
- Patented IDC V-Shaped contacts that flex not fatigue when terminated
- Features pointed IDC towers to speed termination and enhance cable retention
- RJ11 & RJ12 compatible
- Molded category identification on jack face

Order No.	SAP No.	Description
KSJ-00033-**	Consult Molex	Keystone Jack, Category 6, 8W, 568A/B

** Color Options - 01 = Almond, 02 = White, 04 = Black, 05 = Ivory, 08 = Light Gray, RD = Red, BL = Blue, GR = Green, YL = Yellow, RG = Orange, PP = Purple. Standard stocked color - White. All colors may be subject to availability and variable pricing.



PowerCat 6 U/UTP LS0H Patch Cords

Molex PowerCat 6 U/UTP Patch Cords are key components of PowerCat 6 U/UTP End-to-End Solution. The PowerCat 6 Patch Cords are designed to support data networks for 10/100BASE-T and 1000BASE-T applications. The patch cable is made from high quality four pair 24 AWG stranded copper wire. Available in a range of colors and lengths, PowerCat 6 Patch Cords are pre-terminated with RJ45 plugs and feature anti-snap slim strain relief slip on boots.

- 4 pair 24 AWG stranded wire
- Pre-terminated with WE8W plugs
- Slim clear anti-snap slip on boots
- Suitable for EIA 568A or 568B wiring applications
- LS0H sheath

Order No.	SAP No.	Description
PCD-21303-**	Consult Molex	PowerCat 6 U/UTP Patch Cord PVC - 3 ft
PCD-21305-**	Consult Molex	PowerCat 6 U/UTP Patch Cord PVC - 5 ft
PCD-21307-**	Consult Molex	PowerCat 6 U/UTP Patch Cord PVC - 7 ft
PCD-21310-**	Consult Molex	PowerCat 6 U/UTP Patch Cord PVC - 10 ft

Note: Other lengths are available, please contact Molex ** Color Options - 0C = Red, 0E = Gray, 0H = Blue, 0J = Green, 0K = Yellow, 0W = White, 0P = Purple, 0N = Orange, BK = Black

PoE Cabling and Connectivity - Cat6A



PowerCat 6A Shielded Cable

PowerCat 6A F/UTP Cable is a single foil shielded twisted pair cable, offering enhanced performance. It minimizes alien crosstalk, provides excellent signal isolation and provides superior electromagnetic interference (EMI) protection.

- Supports high speed data network applications such as 10-Gigabit Ethernet (10GBASE-T)
- 1000 ft. to 0 ft. markers
- ETL verified to TIA-568-C.2 Cat 6A component compliance
- Resistant to alien crosstalk
- Color coded for ease of termination
- Enhanced performance overall single foil shielded twisted pair cable construction
- Available in UL Listed CMR and CMP constructions

Order No.	SAP No.	Description
CAA-0320P-02	183020005	PowerCat6A F/UTP 4 Pair Cable, Plenum, 1000 ft Reel - White
CAA-0320P-08	183020003	PowerCat6A F/UTP 4 Pair Cable, Plenum, 1000 ft Reel - Gray
CAA-0320P-BL	183020004	PowerCat6A F/UTP 4 Pair Cable, Plenum, 1000 ft Reel - Blue
CAA-0320R-02	183020008	PowerCat6A F/UTP 4 Pair Cable, Riser, 1000 ft Reel - White
CAA-0320R-08	183020006	PowerCat6A F/UTP 4 Pair Cable, Riser, 1000 ft Reel - Gray
CAA-0320R-BL	183020007	PowerCat6A F/UTP 4 Pair Cable, Riser, 1000 ft Reel - Blue



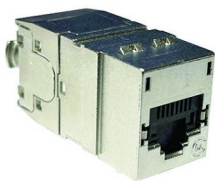
PowerCat 6A Shielded Patch Panels

PowerCat 6A Patch Panels features the unique DataGate shielded connector. This shielded connector offers superior alien crosstalk suppression, excellent insertion loss protection and provides enhanced electromagnetic interference (EMI) protection by utilizing robust die-cast zinc alloy connector body housing. Patch Panels are made from robust sheet metal and are supplied with removable rear cable management trays for cable strain relief and neat cable dressing, front and rear port numbering and individual ports may be color coded using connector icon labels for site specific network administration.

- 24 Ports 1U & 48 Port 2U
- EIA 568A/B wired
- Standard 19" rack mount
- IDC contacts that flex not fatigue when terminated
- Pointed IDC towers to speed termination and enhance cable retention
- Integral cable management shelf ensure bend radius compliance
- Grounding screws included

Order No.	SAP No.	Description
PID-00217	182960022	PowerCat 6A 24 Port Patch Panel 568A/B Shielded - 1U
PID-00219	182960024	PowerCat 6A 48 Port Patch Panel 568A/B Shielded - 2U
PID-00218	182960023	PowerCat 6A 24 Port Angled Patch Panel 568A/B Shielded - 1U
PID-00220	182960025	PowerCat 6A 48 Port Angled Patch Panel 568A/B Shielded - 2U
Accessories		
CSP-00021-**	Consult Molex	Blank Connector Icon Labels 6-Pack (Bag of 10)

** Color Options - 01 = Almond, 02 = White, 05 = Ivory, 08 = Light Gray, RD = Red, BL = Blue, GR = Green, YL = Yellow, RG = Orange, PP = Purple. All colors may be subject to availability and variable pricing.



PowerCat 6A DataGate Shielded Straight and Side Entry Jack

The PowerCat 6A DataGate jack offers superior alien crosstalk suppression, excellent insertion loss, and provides enhanced electromagnetic interference (EMI) protection by utilizing robust die cast zinc alloy jack body housing. This shielded jack also features a unique spring loaded shutter that not only protects it from dust and contaminants, but the ingenious spring loaded design also ejects improperly seated patch cords. The shielded jack is dual colour coded for either 568A or 568B wiring schedules. The Molex C6A DataGate RJ45 360 ° shielded jack accommodates flexible cable routing by allowing 90 ° or 180 ° cable entry. The PowerCat 6A DataGate Shielded Jack was specifically designed for highspeed 10GB data transmission. This unique modular jack is also backwards compatible with Shielded C6 and C5e systems. Molex recommends that the full range of PowerCat 6A Shielded products be used in an end-to-end system to maximize cabling performance. This system is compliant with the ISO/IEC 11801 Amd 1 and ANSI/TIA-568.2-D requirements for the support of 10GBASE-T transmission.

- Robust die cast zinc alloy housing
- 360°Shielded
- Accommodates flexible cable routing by allowing 90 ° or 180 ° cable entry
- Dual Color coding allows 568A/B wiring
- Patented IDC (insulation displacement contact) V-shaped contacts that flex not fatigue when terminated
- Spring-Loaded Shutter
- Accepts color coded port identification labels
- Category 6A performance when installed as a complete PowerCat Shielded System
- Spring loaded cable/drain wire clamp
- Cable can be terminated in 3 directions – Straight, on left or right side of jack
- Complies with ISO/IEC 11801 and TIA Cat 6A channel and PL requirements
- Jack can be terminated with 4 Pair Termination Tool or standard IDC Punch Down Tool
- RoHS Compliant
- Molex DataGate jacks may accommodate both solid (AWG22 to AWG24) and stranded (AWG26) cables

Order No.	SAP No.	Description
KSJ-00096-**	Consult Molex	PowerCat 6A DataGate Shielded Straight and Side Entry Jack

** Color options: 01 - Almond, 02 - White, 04 - Black, 05 - Ivory, 08 - Gray, BL - Blue, GR - Green, RG - Orange, PP - Purple, RD - Red, YL - Yellow ** Please note: While termination of the jack is possible with the 110 punch-down tool, tight tolerances within the outlet design could result in an unintentional short between the conductor wires and the metal housing. Therefore, Molex strongly recommends the use of the 4-pair termination tool to ensure even, consistent terminations, and minimize the risk of this occurring.

Order No. Reference

Order No.	SAP No.	Description	Page
180788-1000	1807881000	CoreSync Driver Programmer Kit	15
180788-2000	1807882000	CoreSync Fixture Manufacturer Kit	15
180788-3000	180788-3000	CoreSync Field Tester Kit	15
1807981000	1807981000	CoreSync Gateway 90W 802.3bt, Silver Metal	9
1808282000	1808282000	CoreSync MultiGate, 90W	10
1809875000	1809875000	CoreSync API and BACnet Gateway	8
1809930001	1809930001	CoreSync Gateway 60W UPoE, Silver Metal	9
1809931001	1809931001	CoreSync MechoShades Gateway	9
1809932012	1809932012	CoreSync Gateway 60W UPoE, 1xCV, 24V	9
1809933001	1809933001	EnOcean Gateway, 902MHz NA, White Metal	9
1809933002	1809933002	EnOcean Gateway, 868MHz EU, White Metal	9
1809965101	1809965101	CoreSync Compact Driver, Single, 350mA	13
1809965102	1809965102	CoreSync Compact Driver, Single, 500mA	13
1809965103	1809965103	CoreSync Compact Driver, Single, 700mA	13
1809965104	1809965104	CoreSync Compact Driver, Single, 1050mA	13
1809965106	1809965106	CoreSync Compact Driver, Single, 880mA	13
1809965107	1809965107	CoreSync Compact Driver, Single, 300mA	13
1809965108	1809965108	CoreSync Compact High Current Driver, Single, 1200mA	13
1809965109	1809965109	CoreSync Compact High Current Driver, Single, 1400mA	13
1809966101	1809966101	CoreSync Compact Driver, Dual, 350mA	13
1809966102	1809966102	CoreSync Compact Driver, Dual, 500mA	13
1809966103	1809966103	CoreSync Compact Driver, Dual, 700mA	13
1809966104	1809966104	CoreSync Compact Driver, Dual, 1050mA	13
1809966106	1809966106	CoreSync Compact Driver, Dual, 880mA	13
1809966107	1809966107	CoreSync Compact Driver, Dual, 300mA	13
1809966108	1809966108	CoreSync Compact High Current Driver, Dual, 1200mA	13
1809966109	1809966109	CoreSync Compact High Current Driver, Dual, 1400mA	13
180997-0009	180997-0009	EnOcean Wireless 20A Relay 902MHz	10
180997-0109	180997-0109	EnOcean Wireless 20A Relay 868MHz	10
1809970004	1809970004	EnOcean Occupancy Sensor, Ceiling Mount - 902MHz NA	11
1809970005	1809970005	EnOcean Occupancy Sensor, Wall Mount- 902MHz NA	11
1809970006	1809970006	EnOcean Ambient Light Sensor, 902MHz NA	11
1809970007	1809970007	EnOcean Temp/Humidity Sensor, 902MHz NA	12
1809970104	1809970104	EnOcean Occupancy Sensor, Ceiling Mount- 868MHz EU	11
1809970105	1809970105	EnOcean Occupancy Sensor Wall Mount, 868MHz EU	11
1809970106	1809970106	EnOcean Ambient Light Sensor, 868MHz EU	11
1820560000	1820560000	CoreSync 2x2 Troffer, ADJ CCT - MAIN HSG	14
1820891000	1820891000	CoreSync Advanced RGBW Indicator, White	13
1820892000	1820892000	CoreSync Advanced Lighting Sensor, Std White	12
1820893000	1820893000	CoreSync Advanced Environmental Sensor (White)	12
1820901000	1820901000	CoreSync Fixture Sensor, Highbay, White	11
1820911000	1820911000	CoreSync PoE Fixture-Mounted Sensor R	11
1821350002	1821350002	CoreSync Emergency Lighting Module, 350D	13
1821350003	1821350003	CoreSync Emergency Lighting Module, 500D	13
1821350004	1821350004	CoreSync Emergency Lighting Module, 700D	13
1821350005	1821350005	CoreSync Emergency Lighting Module 1050D	13
1821350006	1821350006	CoreSync Emergency Lighting Module, 880D	13
1821351201	1821351201	CoreSync Emergency Lighting Bypass, 350S	13
1821351202	1821351202	CoreSync Emergency Lighting Bypass, 500S	13
1821351203	1821351203	CoreSync Emergency Lighting Bypass, 700S	13
1821351204	1821351204	CoreSync Emergency Lighting Bypass 1050S	13
1821351206	1821351206	CoreSync Emergency Lighting Bypass, 880S	13
1821351211	1821351211	CoreSync Emergency Lighting Bypass, 350D	13
1821351212	1821351212	CoreSync Emergency Lighting Bypass, 500D	13
1821351213	1821351213	CoreSync Emergency Lighting Bypass, 700D	13
1821351214	1821351214	CoreSync Emergency Lighting Bypass 1050D	13
1821351216	1821351216	CoreSync Emergency Lighting Bypass, 880D	13
8600003592	8600003592	CoreSync 2 Basic Perpetual License	8
8600003593	8600003593	CoreSync 2 Plus Perpetual License	8
8600003594	8600003594	CoreSync 2 Premium Perpetual License	8
8600003759	8600003759	CoreSync 2 Annual Software Maintenance	8
CAA-0184P-02	181700047	PowerCat 5e 4 Pair Cable, Plenum, 1000 ft Box - White	17
CAA-0184P-08	181700048	PowerCat 5e 4 Pair Cable, Plenum, 1000 ft Box - Light Gray	17
CAA-0184P-BL	181700046	PowerCat 5e 4 Pair Cable, Plenum, 1000 ft Box - Blue	17
CAA-0184R-02	181700044	PowerCat 5e 4 Pair Cable, Riser, 1000 ft Box - White	17
CAA-0184R-08	181700045	PowerCat 5e 4 Pair Cable, Riser, 1000 ft Box - Light Gray	17
CAA-0184R-BL	181700043	PowerCat 5e 4 Pair Cable, Riser, 1000 ft Box - Blue	17
CAA-0195P-02	181740024	PowerCat 6 U/UTP 4 Pair Cable, CMP Plenum, PVC Alloy, 1000ft Reel in a box - White	19
CAA-0195P-08	181740025	PowerCat 6 U/UTP 4 Pair Cable, CMP Plenum, PVC Alloy, 1000ft Reel in a box - Light Gray	19
CAA-0195P-BL	181740023	PowerCat 6 U/UTP 4 Pair Cable, CMP Plenum, PVC Alloy, 1000ft Reel in a box - Blue	19
CAA-0195P-GR	181740031	PowerCat 6 U/UTP 4 Pair Cable, CMP Plenum, PVC Alloy, 1000ft Reel in a box - Green	19
CAA-0195P-YL	181740030	PowerCat 6 U/UTP 4 Pair Cable, CMP Plenum, PVC Alloy, 1000ft Reel in a box - Yellow	19
CAA-0195R-02	181740027	PowerCat 6 U/UTP Cable, 4 Pair, CMR Riser, PVC, 1000ft Reel in a box - White	19
CAA-0195R-08	181740028	PowerCat 6 U/UTP Cable, 4 Pair, CMR Riser, PVC, 1000ft Reel in a box - Gray	19
CAA-0195R-BL	181740026	PowerCat 6 U/UTP Cable, 4 Pair, CMR Riser, PVC, 1000ft Reel in a box - Blue	19
CAA-0195R-GR	181740034	PowerCat 6 U/UTP Cable, 4 Pair, CMR Riser, PVC, 1000ft Reel in a box - Green	19
CAA-0195R-YL	181740033	PowerCat 6 U/UTP Cable, 4 Pair, CMR Riser, PVC, 1000ft Reel in a box - Yellow	19
CAA-0320P-02	183020005	PowerCat6A F/UTP 4 Pair Cable, Plenum, 1000 ft Reel - White	21
CAA-0320P-08	183020003	PowerCat6A F/UTP 4 Pair Cable, Plenum, 1000 ft Reel - Gray	21
CAA-0320P-BL	183020004	PowerCat6A F/UTP 4 Pair Cable, Plenum, 1000 ft Reel - Blue	21
CAA-0320R-02	183020008	PowerCat6A F/UTP 4 Pair Cable, Riser, 1000 ft Reel - White	21
CAA-0320R-08	183020006	PowerCat6A F/UTP 4 Pair Cable, Riser, 1000 ft Reel - Gray	21
CAA-0320R-BL	183020007	PowerCat6A F/UTP 4 Pair Cable, Riser, 1000 ft Reel - Blue	21
CAA0195P-3KBL	181740029	PowerCat 6 U/UTP 4 Pair Cable, CMP Plenum, PVC Alloy, 3000ft Reel - Blue	19
CSP-00021-**	Consult Molex	Blank Connector Icon Labels 6-Pack (Bag of 10)	17, 19, 21
CSP-00022-**	Consult Molex	Data Connector Icon Labels 6-Pack (Bag of 10)	17, 19
CSP-00023-**	Consult Molex	Voice Connector Icon Labels 6-Pack (Bag of 10)	17, 19
KSJ-00018-**	Consult Molex	PowerCat 6 DataGate Jack, 568A/B	19
KSJ-00024-**	Consult Molex	PowerCat 5e DataGate Jack, 568A/B - Shuttered	17

Order No. Reference

Order No.	SAP No.	Description	Page
KSJ-00032-**	Consult Molex	Keystone Jack, Category 5e, 8W, 568A/B	17
KSJ-00033-**	Consult Molex	Keystone Jack, Category 6, 8W, 568A/B	20
KSJ-00096-**	Consult Molex	PowerCat 6A DataGate Shielded Straight and Side Entry Jack	22
PCD-01F03-**	Consult Molex	PowerCat 5e U/UTP Patch Cord PVC - 3 ft	18
PCD-01F05-**	Consult Molex	PowerCat 5e U/UTP Patch Cord PVC - 5 ft	18
PCD-01F07-**	Consult Molex	PowerCat 5e U/UTP Patch Cord PVC - 7 ft	18
PCD-01F10-**	Consult Molex	PowerCat 5e U/UTP Patch Cord PVC - 10 ft	18
PCD-21303-**	Consult Molex	PowerCat 6 U/UTP Patch Cord PVC - 3 ft	20
PCD-21305-**	Consult Molex	PowerCat 6 U/UTP Patch Cord PVC - 5 ft	20
PCD-21307-**	Consult Molex	PowerCat 6 U/UTP Patch Cord PVC - 7 ft	20
PCD-21310-**	Consult Molex	PowerCat 6 U/UTP Patch Cord PVC - 10 ft	20
PID-00141	182090036	PowerCat 6 24 Port Loaded Patch Panel, RJ45 568A/B UTP - 1U - Graphite	19
PID-00142	182090037	PowerCat 6 48 Port Patch Loaded Panel, RJ45 568A/B UTP - 2U - Graphite	19
PID-00174	181060023	PowerCat 5e 24 Port DataGate Patch Panel RJ45 568A/B UTP - 1U	17
PID-00175	181060024	PowerCat 5e 48 Port DataGate Patch Panel RJ45 568A/B UTP - 2U	17
PID-00217	182960022	PowerCat 6A 24 Port Patch Panel 568A/B Shielded - 1U	21
PID-00218	182960023	PowerCat 6A 24 Port Angled Patch Panel 568A/B Shielded - 1U	21
PID-00219	182960024	PowerCat 6A 48 Port Patch Panel 568A/B Shielded - 2U	21
PID-00220	182960025	PowerCat 6A 48 Port Angled Patch Panel 568A/B Shielded - 2U	21

Melbourne, Australia
Tel: +61 3 9971 7111

Shanghai, China
Tel: +86 215 048 0889

Bangalore, India
Tel: +91 80 6683 8412

Tczew, Poland
Tel: +48 58 530 62 00

Johannesburg, South Africa
Tel: +27 108 232 208

Portsmouth, UK
Tel: +44 2392 205800

Dubai, UAE
Tel: +971 564036976

Lisle, IL USA
Tel: +1 866 733 6659

www.molexc.es.com

molex