

# CoreSync 2x2 Troffer

**The CoreSync 2x2 Troffer Luminaire utilizes the latest technologies in LED lighting, networking and control software to create a highly efficient, cost-effective and aesthetically powerful experience.**

The CoreSync 2x2 Troffer is a rugged yet elegant luminaire designed to reduce installation costs, help achieve energy-saving objectives and provide a pleasant lighting experience for end users. Together with the latest LEDs, industry-standard network switches and CoreSync control software managing PoE Gateways, LED Smart Drivers and an array of sensor options, the CoreSync 2x2 Troffer Luminaire delivers an easy-to-apply lighting solution for new construction or retrofit applications.



## FEATURES AND ADVANTAGES

PoE-powered and controlled	Utilizing standards-based low voltage PoE infrastructure for power and communication
Removable Smart Lighting Element with onboard LEDs, sensors	Easy to remove for future upgrades
Color tunable	Creates unique scenes and biorhythmic lighting sequences, with CoreSync Manager Control software
Integrated sensors: ambient light, occupancy, color temperature and power metering; optional air quality	Provide granular lighting and other building automation control data
Indicator RGBW LEDs	Integrated auxiliary notification system for live alerts, indications, directions, occupancy status, emergencies, etc.
High quality diffuser with large luminous area	Superior and uniform light distribution, choice of perforation type
Robust and reliable construction	Ensures long life and safe operation
Special lighting-grade paint finish	Highly reflective, durable and attractive
Class 2 rated electronic device	Safe, easy access and long life
Removable protective topside cover (optional)	Easy cleaning of upward-facing LED areas
Innovative seismic clip design in 2 orientations	Provides effective and easy-to-apply seismic safety

## Power over ethernet (PoE) Ready

**The CoreSync 2x2 LED Troffer Series Luminaire is PoE-ready thanks to the built-in CoreSync PoE Gateway and Smart Driver**



[www.molexces.com/products/coresync/](http://www.molexces.com/products/coresync/)

# CoreSync 2x2 Troffer ➤

## SPECIFICATIONS

Color Temp:	Tunable 2700K to 5700K
Max Lumens:	4000 lm
CRI:	80+
Efficacy:	Up to 84 LPW
Voltage:	PoE/PoE+/UPOE: 42-57VDC
Max Input (W):	52 W
Dimensions:	23-7/8" L x 23-7/8" W x 2-15/16" H
Weight:	7.26 kg, combined
Operating Temp:	0° to +40°C
Fixture Color:	White
Compliance:	UL 2108, CSA C22.2 #250.0, FCC
Est. LED Life:	50,000 Hours
Installation:	Indoor, NEMA 2 Grid Ceiling
For Use With:	CoreSync Control System

### Photometry

#### 82 LPW

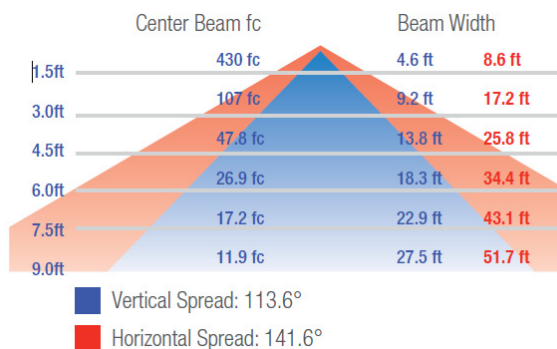
Catalog No.	182056
Nom Lumen	3300 lm
Input Watts	40 W

Lumens Per Zone					
Zone	Lumens	% Total	Zone	Lumens	% Total
0-10	91.9	2.8%	90 - 100	0.2	0%
10-20	267.3	8.2%	100 - 110	0.0	0%
20-30	417.3	12.8%	110 - 120	0.0	0%
30-40	524.3	16.1%	120 - 130	0.0	0%
40-50	572.4	17.6%	130 - 140	0.0	0%
50-60	557.3	17.1%	140 - 150	0.0	0%
60-70	484.3	14.9%	150 - 160	0.0	0%
70-80	288.5	8.9%	160 - 170	0.0	0%
80-90	51.4	1.6%	170 - 180	0.0	0%

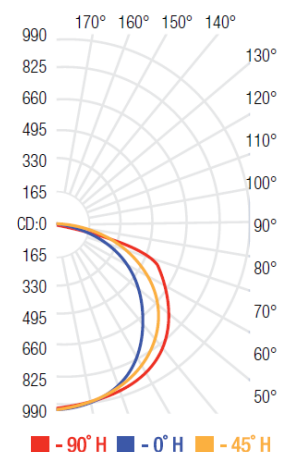
Zonal Lumen Summary		
Zone	Lumens	% Luminaire
0 - 30	776.4	23.9%
0 - 40	1,300.7	40%
0 - 60	2,430.4	74.7%
60 - 90	824.3	25.3%
70 - 100	340.2	10.5%
90 - 120	0.2	0%
0 - 90	3,254.6	100%
90 - 180	0.2	0%
0 - 180	3,254.9	100%

### Photometry

#### Illuminance at a Distance



#### Polar Candela Distribution



[www.molex.com/products/coresync/](http://www.molex.com/products/coresync/)

# CoreSync 2x2 Troffer

## More about the CoreSync 2x2 LED Troffer Luminaire Series

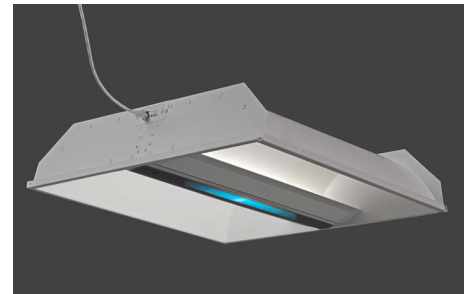
### Fully Dimmable and Color Tunable

The CoreSync 2x2 LED Troffer Series Luminaire features Zero to 10 dimming, along with a full range of color tuning.



### Built-In Sensors and Indicator LEDs

The Smart Lighting Element features RGBW indicator LEDs, programmable for a wide range of uses and colors.



### Removable Smart Lighting Element

The CoreSync Smart Lighting Element is designed for easy removal, for upgrades or replacement  
Choice of round or slotted perforation of the diffuser



[www.molexces.com/products/coresync/](http://www.molexces.com/products/coresync/)

# CoreSync 2x2 Troffer >

## ORDERING INFORMATION

Order Number	Power Source	Features	Description
182056-0000	UPOE/PoE+ 50 W max. at 48 VDC	Integrated CoreSync PoE Gateway; heavy-gauge metal base material; highly- reflective, durable white finish	CoreSync 2x2 Troffer, ADJ CCT- MAIN HSG

## ACCESSORIES

Acrylic Top Cover	180936-2000	Protective cover for upward-facing LEDs
Mounting Clip	182057-0001	General Clip to mount to grid
Seismic Clip L-Shape	182058-0001	90° Seismic Clip to mount to grid
Seismic Clip Straight	182059-0001	Straight Seismic Clip to mount to grid

## Product Application



**CoreSync 2x2 Troffer Luminaire in full PoE network installation**

[www.molex.com/products/coresync/](http://www.molex.com/products/coresync/)

Molex is a registered trademark of Molex, LLC in the United States of America and may be registered in other countries; all other trademarks listed herein belong to their respective owners. This information is correct at the time of publication, specifications are subject to change.

Order No. DS-1820560000

SK/2024.04

©2024 Molex