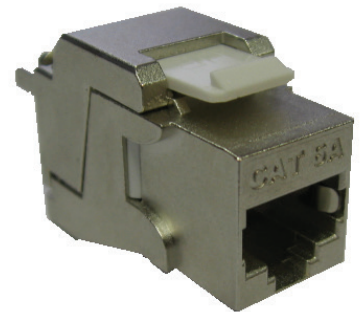


PowerCat 6A Tool-less Shielded Keystone Jack >

The Shielded Tool-less C6A Keystone Jack is in addition to the PowerCat 6A STP product line designed for installation in Structured Cabling Systems requiring Keystone size apertures for wall outlet installations. The jack is terminated without the use of a Punch Down Tool.

The jack is designed for use in a two-connector permanent link or channel configuration so the standard Molex C6A Shielded DataGate panels are installed in the Distribution closet and C6A Keystone Jacks are installed in the Telecommunication/Wall Outlets. The jack does not feature a dust shutter. This product provides excellent protection against electromagnetic interference protection due to its fully shielded 360° construction.



FEATURES & ADVANTAGES

360° shielding for EMI protection

Easy and fast termination process

Ability to attach the cable in either 568A or 568B wiring.

Compatible with Molex C6 DataGate jacks in a two connector permanent link or channel configuration

www.molex.com/products/copper/c6a

PowerCat 6A Tool-less Shielded Keystone Jack

SPECIFICATIONS

MECHANICAL

Jack Connector

Housing: Zinc Alloy plated Bright Ni/Cu

Operating Life: Minimum 750 insertion cycles

Contact Material: Copper Alloy

Contact Plating: 1.25 micrometres Au/Ni

Contact Force: 100g minimum

Plug Retention Force: 6.8kg minimum

IDC Connector

Housing: Polycarbonate, UL94V-0 rated

Operating Life: Minimum 20 reterminations

Contact Material: Copper Alloy

IDC Contact Plating: Tin Matte Finish

Contact Force: 100g minimum

Wire Accommodation: 22-24 AWG solid

ELECTRICAL

Interface Resistance: 20mΩ

Initial Contact Resistance: 2.5mΩ

Insulation Resistance: >100MΩ

PHYSICAL

Dimensions:

19.3mm (H) x 17mm (W) x 42.4mm (D)
(0.76"H x 0.67"W x 1.67"D)

Shipping Weight: 40g (1.41 oz)

COMMERCIAL STANDARDS

TIA/EIA-568-C.2:2009

EN 50173-1:2009/A1

ISO/IEC 11801:2011 (Ed 2.2)

FCC Subpart F68.5

IEC -60603-7-51:2010

Delta Certificate

PoE

Our PowerCat 6A system is suitable for the most demanding PoE applications:

IEEE 802.3bt from Type 1 to Type 4, and

CISCO UPoE+

HD Base-T PoH up to 100W

RP3 compliant as defined by EN 50174-

2:2018, ISO/IEC 14763-2:2019 and AS/NZS

14763.2:2020

Notes:

For new installations of PoE Type 3 / Class 5 and above that wish to be eligible for the Molex 25 year Application Assurance Warranty, we require Category 6A cable to be used throughout.

To confirm your PoE / RP3 cabling design is eligible for the Molex 25 year Application Assurance Warranty, your design must be verified and validated with the Molex PoE Calculator. Read more <https://www.molex.com/poe-calculator>

Molex recommends that the PoE feature on an individual switch port are power disabled prior to unplugging the associated powered Device.

Molex recommends that the full range of PowerCat 6A products be used in a system to maximize cabling and PoE performance. Details on Molex requirements for Warranty can be found at <https://www.molex.com/about-us/our-warranty/>

ORDERING INFORMATION

Order No.	SAP No.	Description
KSJ-00079	18301-0070	PowerCat 6A Tool-less shielded Keystone Jack, RJ45, 360°, 568A/B - Gray

www.molex.com/products/copper/c6a