

# Kingsway Hospitals >



## CUSTOMER PROFILE

### COMPANY

Kingsway Hospitals is a corporate-grade, high-tech healthcare facility located in Nagpur, central India. Nagpur is rapidly emerging as the Healthcare capital of India.

The new build project of Kingsway Hospitals in Nagpur is a 400,000 square feet area, vertical tower comprising of 11 storeys. The hospital has 10 modular Operation Theatres (OT's), about 60 consulting chambers and around 28 departments.

### INDUSTRY

Healthcare sector.

## THE CHALLENGE

With it being a hospital, there was not the luxury of redoing cabling in patient-occupied areas due to infection-control related protocols. Hence, additional lengths of cables and TV serviceability features had to be built into the DNA of the design.

The layout of the project underwent several changes over the course of the 4 year long construction. Therefore, the cabling had to be re-designed, and bringing this agility into design proved to be another challenge.

## THE PRODUCT

PowerCat C6 LSZH solution

Outdoor armored OS2 Singlemode fiber

LSZH UTP patch cords and Shuttered I/O (inlet/outlet).

### PRODUCT FEATURES

Molex's PowerCat solutions have been developed with the highest performing capabilities in mind, with improved data transmission over higher frequencies and enhanced noise suppression. Molex Cat 6 cable offers enhanced alien crosstalk characteristics, allowing 10GBASE-T to be run for the same 100 meter maximum distance.

## THE SOLUTION

Kingsway Hospitals chose Molex as the turn-key vendor for the design of the network. Molex collaborated along with the System Integrator company, Flair Network Systems to resolve the many challenges associated with connectivity and communication.

Surgeries today are technology-assisted and require facilities like high-bandwidth internet and intranet connections to access radiological information, MRI and CT scans, as well as related videos. To combat these concerns, Molex suggested that every operation theatre (10 OTs) be equipped with minimum 14 Gigabytes connectivity. The OT complex therefore was set up with 140 GB of unwavering connectivity.

A new piece of technology was also introduced, wherein the video feed of the surgery is recorded from the Operation Theatre and can be transmitted over the intranet directly to the auditorium (which can accommodate 600+ people).

Molex further advised on the use of LSZH fiber cabling for its low-smoke characteristics, ensuring maximum safety in the hospital premises.

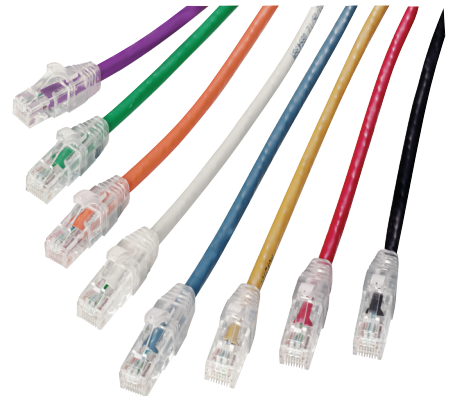
## THE BENEFITS

In the healthcare industry, it is extremely important that there is no room for loose connections, especially in mission-critical areas like ICUs and OTs. Molex's Shuttered I/Os (inlet/outlets) ensured that the patchcords were securely inserted into every I/O.

The range of colored patchcords and I/O predominantly provided by Molex (Green for Data; Yellow for Wireless; Red for CCTV; Blue for VoIP; Orange for Access control; Purple for Nurse call system and Grey for IPTV) helped in easily identifying and maintaining the network services.

*Unmesh Deshpande, CTO at Kingsway Hospital, comments:*

*"Molex offers reliable solutions with high quality, aesthetic products. The network installed is well-designed, easily manageable and highly efficient."*



[www.molexces.com/resource-library/case-studies](http://www.molexces.com/resource-library/case-studies)