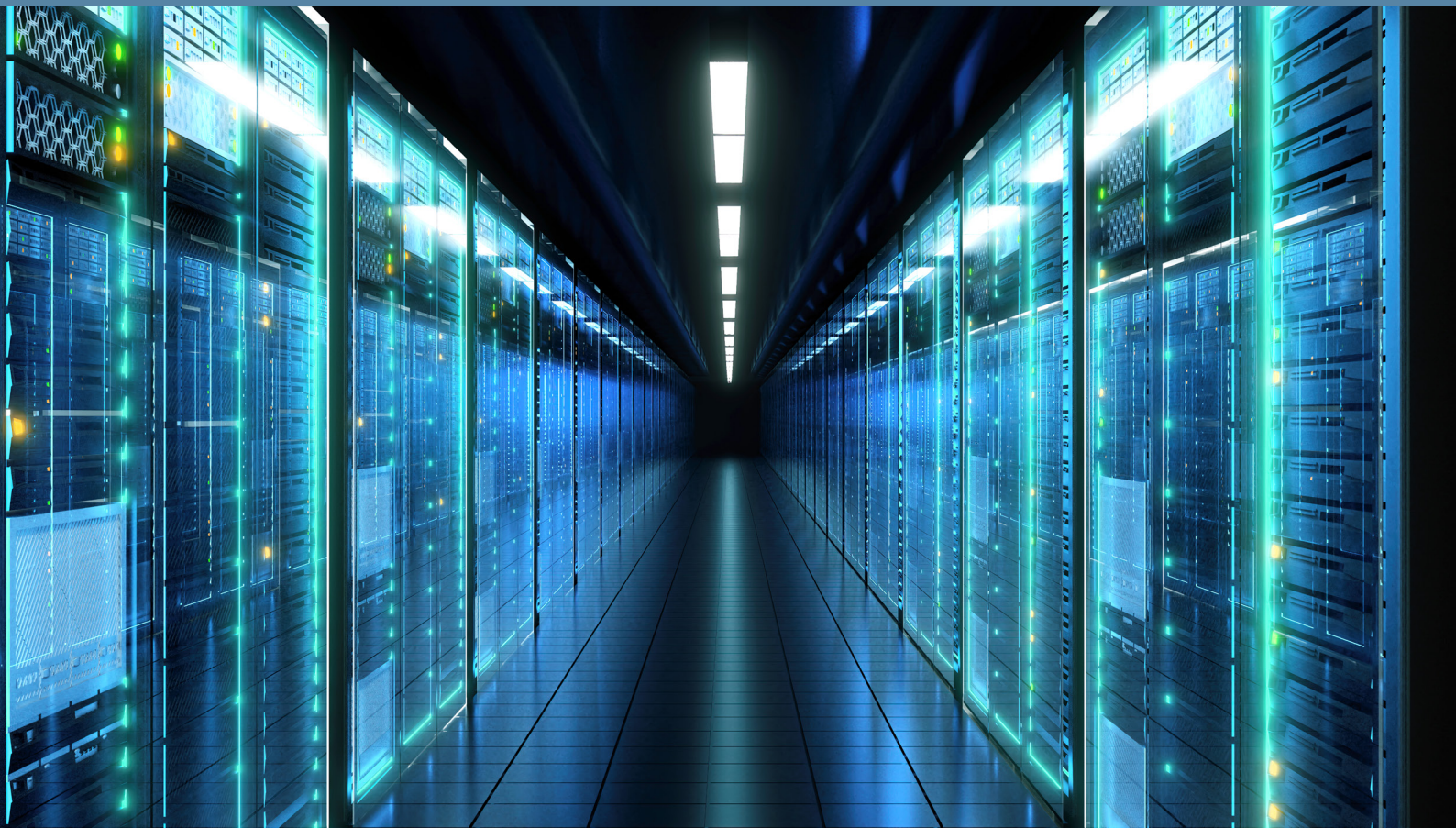


PRODUCT OVERVIEW

MODLINK PLUG & PLAY FIBER

FAST, FLEXIBLE INSTALLATION FOR MISSION-
CRITICAL APPLICATIONS



molex

CONNECTED ENTERPRISE SOLUTIONS >

Part of the Molex Group, Molex Connected Enterprise Solutions has delivered connectivity for organizations and campuses for over 30 years. We have design and manufacturing facilities around the world and trade directly into more than 100 countries.

We insist on high standards, both in product manufacture and in the quality of work provided by our global network of Molex Certified Installers. That's why we offer a 25-year System Performance and Application Assurance Warranty – providing you with confidence our systems will continue to deliver the technical excellence you demand for your business.

As a responsible corporate citizen, we are committed to using environmentally conscious practices during the design and manufacture of our products. These environmental practices are designed to ensure that Molex is developing sustainability through environmental preservation activities.

THE BENEFITS:

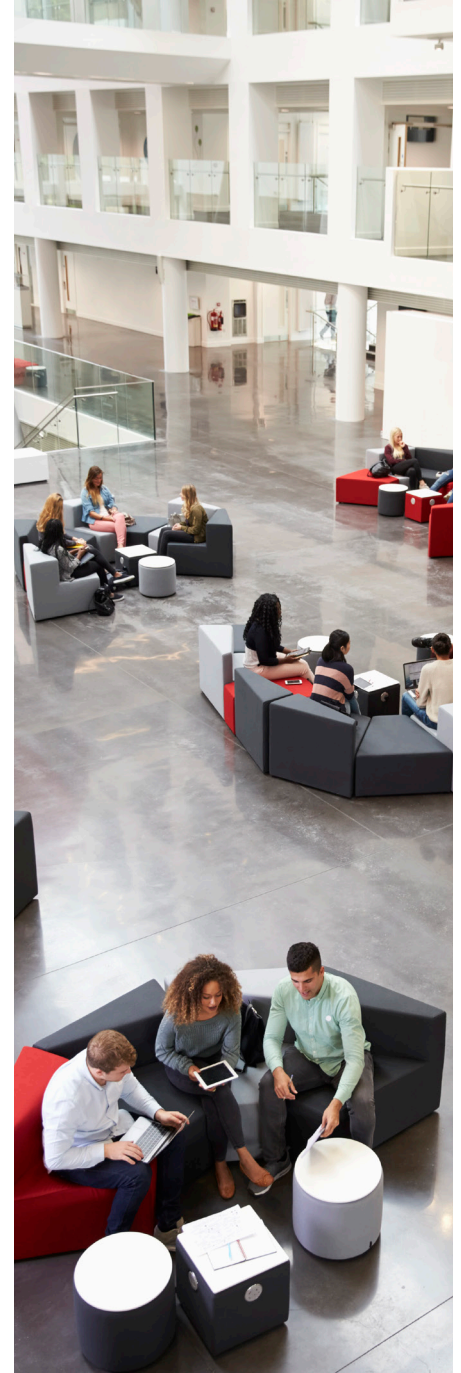
- Reliable high performance products built to be used and re-used
- Comprehensive range covering data center, FTTx, PON and backbone applications
- Technical support teams around the world to support you throughout the life of the installation
- Versatile solutions designed to make upgrades and alterations straightforward
- Hand-selected, Molex-certified installers and consultants ensure quality of service end to end
- 25-year System Performance and Application Assurance Warranty
- Developing high quality business connectivity solutions for over 50 years

MORE INFORMATION

For downloadable datasheets with full specifications, use the product search at molexces.com.

Full product catalogs are available from your local sales team - find your contact here: molexces.com/contact-us/sales-team.

Please note not all products are available in all regions.



PERFORMANCE, RELIABILITY SECURITY >

The Molex ModLink system is a cost-effective, quick and easy fiber system, for backbone and fiber to the desk applications. The ModLink system provides premium factory-controlled optical performance, enabling flexible system configuration and fast, economical installation.

ModLink suits most fiber installations, but is ideal for mission critical applications, such as Data Centers and Storage Area Networks, applications where fast installation is paramount and environments where moves, adds and changes are frequent or managed in-house.

MODLINK CASSETTES >

Compactly sized, individual ModLink cassettes simply click into Molex's range of rack mount fiber management panels and enclosures, providing up to 96 ports in a 1U rack space. They offer front port identification plus labelling field on the cassette top for fiber documentation. Cables utilize OFNP or LS0H rated round loose tube cable featuring a flexible outer jacket that is easy to bend, route and install.

ModLink MTP/MPO cassettes: p/n [MLCXXXXXXXXXX](#)

ModLink MPO cassettes: p/n [PMLCXXXXXXXXXX](#)



MODLINK CABLES >

ModLink Cables provide premium, factory-controlled performance with a variety of connectors and are available in pre-terminated, hybrid pre-terminated assemblies and ModLink cable. Cables utilize OFNP, OFNR, LS0H or CPR rated round loose tube cabling with a flexible outer jacket that is easy to bend, route and install. A patented flexible transition sleeve maintains the routing feature of the round cable, absorbs vibration shock and provides an ideal surface to secure the MTP connector.

A Fiber Optic Configurator Tool is available on the Molex Customer Support Portal to help you generate the right part number for your application: csp.molex.com.

ModLink Advanced Cables p/n [91-XAABB-YLLLC](#)

ModLink MTP PRO Advanced Cables p/n [91-XAABB-YLLLC-PRO](#)

ModLink MPO-MPO Advanced Cables p/n [81-XAABB-YLLLC](#)

MTP-MTP Pre-Terminated Multicore Assembly [9MAABCCDEEFFGHIIIJ](#)

MPO-MPO Pre-terminated Multicore Assembly [8MAABCCDEEFFIIIJ](#)

MTP-PRO-MTP-PRO Pre-Terminated Multicore Assembly [9MAABCCDEEFFGHIIIJ](#)

Other preterminated fiber optic cables are available - [click here for more](#)



COMPATIBLE ENCLOSURES

Xtreme Density / High Density System

Configurable rack mount systems for high density applications. Robust, modular and scalable, the Xtreme Density and High Density Fiber Enclosures are ideal for network consolidation in applications such as data centers, storage area networks and central offices.

Search part no. [XFR-10192](#) and [HFR-10144](#)

Specification Grade Fiber Enclosures

These configurable rack mount units are designed to accommodate both the needs of the installer for the initial assembly and the end user for access, maintenance and fiber protection. Lockable and removable aluminum hinged front and rear doors provide security. Available in 1U, 2U and 4U

Search part no [RFR-00201](#) [RFR-00202](#) [RFR-00205](#)

1U Multi-Function Fiber Enclosures

These configurable rack mount units are designed to accommodate a variety of termination types and adapter configurations. The interchangeable front plate facilitates upgrades as required, while the floor allows maximum flexibility in routing fibers. An extensive range of accessories and adapter plates is available.

Search part no [RFR-00311-BK](#)

Zone Enclosure for Raised / Access Floor

A cost effective, robust, and versatile product designed to support moves, adds and changes in frequently changing enterprise and education environments. The unit fits comfortably in a 600mm x 600mm or 24" x 24" raised/access floor grid and is manufactured from cold-rolled steel, finished in black.

Search part no [CPT-00054](#)

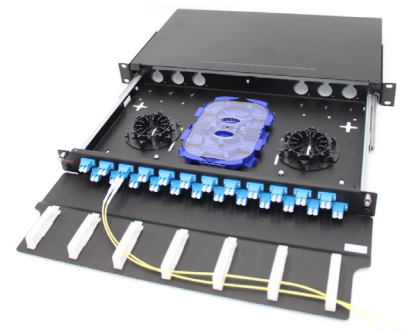
Zone Enclosure for in-Ceiling Installation

A robust and versatile product designed to house passive and active network equipment in a conveniently located, drop/suspended ceiling space to service a local work area or zone. It is an adaptable product that can accommodate copper ports, fiber splices, cassettes or active equipment.

Search part no [CPT-00055](#)



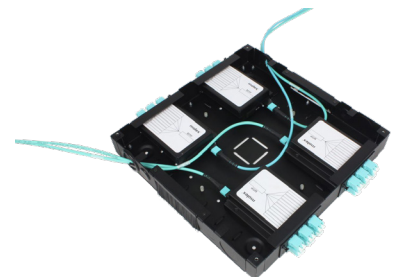
Xtreme Density Enclosure



Multi-Function Fiber Enclosure



Specification Grade Enclosure (2U shown)



Raised Floor Zone Enclosure (shown with cassettes loaded)



In-Ceiling Zone Enclosure

Related Links

[Optical Fiber Products](#)

[Data Center Solutions](#)

[Passive Optical Networks](#)

[OM5](#)

[› www.molexces.com](http://www.molexces.com)

molex