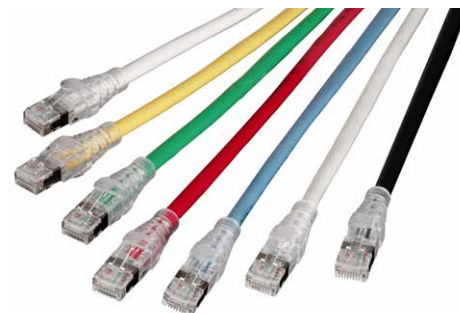


# PowerCat 6A Shielded Patch Cord

Molex PowerCat 6A Shielded Patch Cords are key components of the PowerCat 6A shielded end-to-end solution. Molex PowerCat 6A Patch Cords are designed to support high speed 10GBASE-T networks and are backward compatible with 10/100/1000BASE-T networks. The patch cable is made from high quality four pair 26 AWG stranded copper wire. Available in a range of colors and lengths, PowerCat 6A patch cords are preterminated with RJ45 plugs and feature anti-snap slim strain relief slip on boots.



## FEATURES AND ADVANTAGES

4 pair 26 AWG stranded copper wire

Pre-terminated with RJ45 plugs

Slim clear anti-snap slip on boots

Suitable for EIA 568A or 568B wiring

PVC sheath

10G Performance when installed as a complete PowerCat 6A Shielded System

RoHS Compliant

## SPECIFICATIONS

### Commercial Standards

ISO/IEC 11801 2nd Ed Amd 1 Class EA  
TIA-568-C.2 Cat 6A  
UL 1863; CSA C22.2

### Mechanical Characteristics

#### Cable

##### Conductor size:

26 AWG stranded copper wire

##### Screen material:

Aluminum/polyester shield with tinned copper drain wire

**Nom. O.D.:** 6.5mm

**Sheath:** Polyvinylchloride (PVC)

**Bend radius:** 8X O.D.

**Operating temperature range:**

-20°C to 60°C

#### Plug

**MIN operating life:** 750 insertion cycles

**RJ45 plug material:** Clear

**polycarbonate (PC) Boot material:**

Clear polyvinylchloride (PVC)

**Contact material:** 0.35mm thick copper

**Contact plating:** 1.27µm gold

**RJ45 plug dimensions compliant with:**  
ISO/IEC 60603-7 and FCC 47 Part 68

### Electrical / Optical Characteristics

**Max voltage:** 150 VAC (max)

**Max current:** 1.5A @ 25°C

### Fire Propagation Tests

CM UL 1685, CSA FT1

## ORDERING INFORMATION

Order No.	SAP No.	Description
PCD-07020-**-	Consult Molex	PowerCat 6A Shielded Patch Cord PVC 1.0m
PCD-07021-**-	Consult Molex	PowerCat 6A Shielded Patch Cord PVC 2.0m
PCD-07022-**-	Consult Molex	PowerCat 6A Shielded Patch Cord PVC 3.0m
PCD-07024-**-	Consult Molex	PowerCat 6A Shielded Patch Cord PVC 5.0m
PCD-07026-**-	Consult Molex	PowerCat 6A Shielded Patch Cord PVC 7.0m
PCD-07029-**-	Consult Molex	PowerCat 6A Shielded Patch Cord PVC 10.0m

Insert color code in place of \*\* in part number when ordering Patch Cords:  
0C=Red, 0E=Grey,  
0H=Blue, 0J=Green,  
0K=Yellow, 0W=White,  
0P=Purple, 0N=Orange,  
BK=Black

[www.molex.com/products/copper/cat6a/](http://www.molex.com/products/copper/cat6a/)

Molex is a registered trademark of Molex, LLC in the United States of America and may be registered in other countries; all other trademarks listed herein belong to their respective owners. This information is correct at the time of publication, specifications are subject to change.

Order No. PCD-07020\_9

SK/2023.09

©2023 Molex