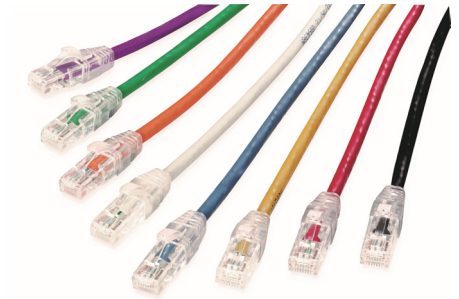


PowerCat 6A UTP Patch Cord >

The Molex PowerCat 6A UTP patch cords are key components of the PowerCat 6A UTP end-to-end solution.

Molex PowerCat 6A Patch Cords are designed to support high speed 10GBASE-T networks and are backward compatible with 10/100/1000BASE-T networks. The patch cable is made from high quality four pair 26 AWG stranded copper wire. Available in a range of colors and lengths, PowerCat 6A patch cords are pre-terminated with RJ45 plugs and feature anti-snag slim strain relief slip on boots.



FEATURES & ADVANTAGES

4 pair 26 AWG stranded copper wire

Pre-terminated with UTP RJ45 plugs

Slim clear anti-snag slip on boots

Suitable for EIA 568A or 568B wiring

LSOH sheath

10G Performance when installed as a complete PowerCat 6A UTP System

SPECIFICATIONS

Commercial Standards

ISO/IEC 11801 ISO/IEC 11801:2017
ANSI/TIA-568.2-D Cat 6A
UL, CSA pending

IEEE 802.3an
IEEE 802.3af (Type 1)
IEEE 802.3at (Type 2)
IEEE 802.3bt (Type 3 & 4)
(when installed in a Molex PowerCat C6A UTP channel)

FIRE PROPAGATION TESTS

IEC 60332-1-1
IEC 61034-2

Environmental Compliance

RoHS and REACH Compliant

Mechanical

Cable
Conductor Size: 26 AWG stranded copper wire
Screen Material: Aluminum/polyester shield with tinned copper drain wire
Nom. O.D.: 6.5mm
Sheath: Low Smoke Zero Halogen (LSOH)
Bend Radius: 8X O.D.
Operating Temperature: -25°C to +55°C

UTP RJ45 Plug

Minimum operating life: 750 insertion cycles

RJ45 Plug Material: Clear Polycarbonate (PC)

Boot Material: Clear Polycarbonate (PC)

Contact Plating: 1.27um gold

RJ45 Plug Dimensions compliant with: ISO/IEC 60603-7 and FCC 47 Part 68

ELECTRICAL

Max voltage: 150 VAC (max)

Max current: 1.5A @ 25°C

www.molex.com/products/copper/cat6a/

PowerCat 6A UTP Patch Cord

SPECIFICATIONS (CONT.)

PoE

Our PowerCat 6A system is suitable for the most demanding PoE applications:

IEEE 802.3bt from Type 1 to Type 4, and
CISCO UPoE+
HD Base-T PoH up to 100W
RP3 compliant as defined by EN 50174-
2:2018, ISO/IEC 14763-2:2019 and AS/NZS
14763.2:2020

Notes:

For new installations of PoE Type 3 / Class 5 and above that wish to be eligible for the Molex 25 year Application Assurance Warranty, we require Category 6A cable to be used throughout.

To confirm your PoE / RP3 cabling design is eligible for the Molex 25 year Application Assurance Warranty, your design must be verified and validated with the Molex PoE Calculator. Read more <https://www.molexces.com/poe-calculator>

Molex recommends that the PoE feature on an individual switch port are power disabled prior to unplugging the associated powered Device.

Molex recommends that the full range of PowerCat 6A products be used in a system to maximize cabling and PoE performance. Details on Molex requirements for Warranty can be found at <https://www.molexces.com/about-us/our-warranty/>

ORDERING INFORMATION

Order No.	SAP No.	Description
PCD-09101-**	Consult Molex	PowerCat 6A UTP Patch Cord LS0H 1m
PCD-09102-**	Consult Molex	PowerCat 6A UTP Patch Cord LS0H 2m
PCD-09103-**	Consult Molex	PowerCat 6A UTP Patch Cord LS0H 3m
PCD-09105-**	Consult Molex	PowerCat 6A UTP Patch Cord LS0H 5m
PCD-09107-**	Consult Molex	PowerCat 6A UTP Patch Cord LS0H 7m
PCD-09110-**	Consult Molex	PowerCat 6A UTP Patch Cord LS0H 10m

Insert color code in place of ** in part number when ordering Patch Cords:

0C=Red, 0E=Gray, 0H=Blue, 0J=Green, 0K=Yellow, 0W=White, 0P=Purple, 0N=Orange, BK=Black

www.molexces.com/products/copper/cat6a/