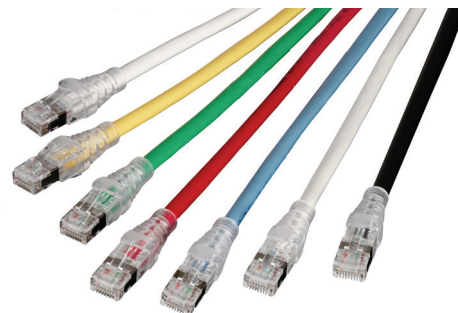


PowerCat 6A Shielded Patch Cord

Molex PowerCat 6A Shielded Patch Cords are key components of the PowerCat 6A shielded end-to-end solution. Molex PowerCat 6A Patch Cords are designed to support high speed 10GBASE-T networks and are backward compatible with 10/100/1000BASE-T networks. The patch cable is made from high quality four pair 26 AWG stranded copper wire. Available in a range of colors and lengths, PowerCat 6A patch cords are preterminated with RJ45 plugs and feature anti-slug slim strain relief slip on boots.



FEATURES AND ADVANTAGES

4 pair 26 AWG stranded copper wire

Pre-terminated with RJ45 plugs

Slim clear anti-slug slip on boots

Suitable for EIA 568A or 568B wiring

PVC sheath

10G Performance when installed as a complete PowerCat 6A Shielded System

RoHS Compliant

SPECIFICATIONS

Commercial Standards

ISO/IEC 11801 2nd Ed Amd 1 Class EA

TIA-568-C.2 Cat 6A

UL 1863; CSA C22.2

Mechanical Characteristics

Cable

Conductor size:

26 AWG stranded copper wire

Screen material:

Aluminum/Mylar shield with tinned copper drain wire

Nom. O.D.: Cable diameter - in. (mm): 0.23 +/- 0.02 (5.9 +/- 0.4)

Sheath: Polyvinylchloride (PVC)

Bend radius: 8X O.D.

Operating temperature range:

14°F to 140°F (-10°C to 60°C)

Plug

MIN operating life: 750 insertion cycles

RJ45 plug material: Clear

polycarbonate (PC) Boot material:

Clear polyvinylchloride (PVC)

Contact material: 0.35mm thick copper

Contact plating: 1.27µm gold

RJ45 plug dimensions compliant with:

ISO/IEC 60603-7 and FCC 47 Part 68

Electrical / Optical Characteristics

Max voltage: 150 VAC (max)

Max current: 77°F (25°C)

Fire Propagation Tests

CM UL 1685, CSA FT1

PoE

Our PowerCat 6 system is suitable for PoE applications as defined below:

IEEE 802.3bt from Type 1 to Type 4, and

CISCO UPoE+

HD Base-T PoH up to 100W

RP3 compliant as defined by EN 50174-

2:2018, ISO/IEC 14763-2:2019 and AS/NZS

14763.2:2020

Notes:

For new installations of PoE Type 3 / Class

5 and above that wish to be eligible for

the Molex 25 year Application Assurance

Warranty, we require Category 6A cable to be

used throughout.

To confirm your PoE / RP3 cabling design is eligible for the Molex 25 year Application Assurance Warranty, your design must be verified and validated with the Molex PoE Calculator. Read more

<https://www.molex.com/poe-calculator>

Molex recommends that the PoE feature on an individual switch port are power disabled prior to unplugging the associated powered Device.

Molex recommends that the full range of PowerCat 6A products be used in a system to maximize cabling and PoE performance. Details on Molex requirements for Warranty can be found at

<https://www.molex.com/about-us/our-warranty/>

www.molex.com/products/copper/cat6a/

PowerCat 6A Shielded Patch Cord

ORDERING INFORMATION

Order No.	SAP No.	Description
PCD-70202-**	Contact Molex	PowerCat 6A Shielded PVC 2ft (0.5m)
PCD-70203-**	Contact Molex	PowerCat 6A Shielded PVC 3ft (1.0m)
PCD-70205-**	Contact Molex	PowerCat 6A Shielded PVC 5ft (1.5m)
PCD-70210-**	Contact Molex	PowerCat 6A Shielded PVC 10ft (3.0m)
PCD-70215-**	Contact Molex	PowerCat 6A Shielded PVC 15ft (4.5m)
PCD-70220-**	Contact Molex	PowerCat 6A Shielded PVC 20ft (6.0m)

** Replace with sheath color code: 0C=Red, 0E=Grey, 0H=Blue, 0J=Green, 0K=Yellow, 0W=White, 0P=Purple, 0N=Orange, BK=Black

www.molex.com/products/copper/cat6a/