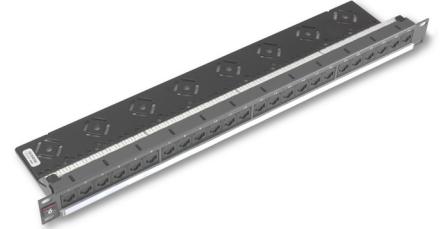


PowerCat 6 Patch Panels

molex

PowerCat 6 Patch Panels are the premier Molex patch panel product line. A key product used in both Category 6 link and channel gigabit ethernet applications. The IDC section consists of V-shaped contacts that flex not fatigue when terminated. Each port features a patented spring-loaded shutter and can be colour coded to match jack outlets. Offering both front and rear labelling options, the patch panel is constructed of cold-rolled steel for additional strength and durability.



Features and Advantages

Available in 1U 24 Port and 2U 48 Port density

Each port features the patented spring-loaded shutter:

- prevents incomplete mating
- protects from dust and contaminants

Patented IDC V-shaped contacts that flex not fatigue when terminated

Features pointed IDC towers to speed termination and enhance cable retention

Dual colour-coding allows for 568 A/B wiring configuration

Front and rear port labelling as well as panel identification label

4 x 6 ganged jack configuration

Individually removable patch panel ports

Integral cable management shelf ensures bend radius compliance

Available with either ANSI or metric hardware kit

Can be terminated using industry standard punchdown tools

RJ-11 & RJ-12 compatible

Moulded category identification on each port face as well as optional port identification icons

RoHS Compliant

www.molexces.com

Molex is a registered trademark of Molex, LLC in the United States of America and may be registered in other countries; all other trademarks listed herein belong to their respective owners. This information is correct at the time of publication, specifications are subject to change.

PowerCat 6 Patch Panels



Specifications

COMMERCIAL STANDARDS

TIA/EIA-568-C.2:2009 cat.6,
EN 50173-1:2011 Class E, ISO/IEC
11801:2010 (Ed 2.2) Class E, FCC
Subpart F68.5
UL Listed

MECHANICAL

Jack Connector
Plastic Housing: Polycarbonate, UL94V-0 rated
or equivalent
Operating Life: Minimum 750 insertion cycles
Contact Material: Copper Alloy
Contact Plating: 1.27 micrometres Au/Ni
Contact Force: 100g minimum
Plug Retention Force: 15 lbs

IDC Connector
Plastic Housing: Polycarbonate, UL94V-0 rated
or equivalent
Operating Life: Minimum 200 reterminations
Contact Material: Copper Alloy
IDC Contact Plating: Tin matte finish
Contact Force: 100g minimum
Wire Accommodation: 22-24 AWG solid

Patch Panel Characteristics
Material: CRS (cold rolled steel)
Thickness: 0.060" (1.52mm)
Coating: Graphite Grey Powdercoat

ELECTRICAL

Interface Resistance: 20 mΩ
Initial Contact Resistance: 2.5 mΩ
Insulation Resistance: >100 MΩ

PHYSICAL

Dimensions:
24 Port with trays
44mm H x 483mm W x 98mm D
48 Port with trays
88mm H x 483mm W x 98mm D

Shipping Weight
24 Port: 1.2kg
48 Port: 2.2kg

Ordering Information

Order No.	SAP No.	Description
PID-00141	Consult Molex	1U 24 Port PowerCat 6 Patch Panel, 568A/B with Cable Management
PID-00142	Consult Molex	2U 48 Port PowerCat 6 Patch Panel, 568A/B with Cable Management
Accessories		
CSP-00021-**	Consult Molex	Blank 6-Pack Icons (Bag of 10)
CSP-00022-**	Consult Molex	Data 6-Pack Icons (Bag of 10)
CSP-00023-**	Consult Molex	Voice 6-Pack Icons (Bag of 10)

Colour Options—insert one of the following colour codes in place of ** when ordering DataGate Patch Panel Port Labelling:

RD = Red, BL = Blue, GR = Green, RG = Orange, YL = Yellow, PP = Purple

Icons: 01 = Almond, 02 = White, RD = Red, BL = Blue, GR = Green, RG = Orange, YL = Yellow, PP = Purple

www.molexces.com

Molex is a registered trademark of Molex, LLC in the United States of America and may be registered in other countries; all other trademarks listed herein belong to their respective owners. This information is correct at the time of publication, specifications are subject to change.