



## PowerCat™ > 6 UTP Solution

### What we do

For over 30 years Molex has manufactured innovative data transport and advanced management solutions.

Bringing Advanced Physical Layer Lifecycle Management to Enterprises Worldwide

### Standards Compliance

ANSI/TIA-568-C.2 Category 6  
ANSI/EIA-1069-A  
ISO 11801 Class E  
IEC 60603-7-4

The PowerCat™ 6 range of Category 6 compliant products provide a high performance end-to-end UTP copper solution, designed to meet and exceed all relevant international performance standards, including TIA/EIA-568-C and ISO/IEC 11801.

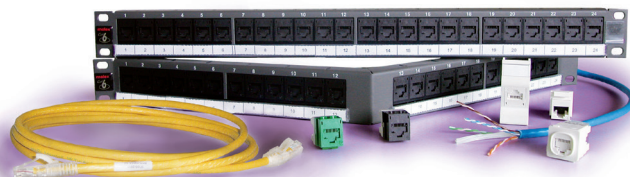
Consisting of cable, patch panels, patch cords and work area modules, the PowerCat 6 - Category 6 solution provides a significant leap in performance and data transmission capability when compared to Category 5e.

### Highlights of the PowerCat 6 solution

- Total end-to-end horizontal cabling solution
- Compliant to TIA/EIA-568-C and ISO/IEC 11801
- Superior headroom to that of Category 5e performance
- Backwards compatible with Molex Category 5e systems – ensuring support for legacy applications
- Independently tested and verified

### What is the Advantage of Category 6 over Category 5e?

Put simply, a Category 6 solution provides positive PowerSum ACR beyond 200Mhz. This means that a Category 6 compliant network infrastructure can provide twice the normal bandwidth of existing Category 5e cabling systems. Other benefits, such as enhanced Return Loss performance also ensure support for high-speed, bidirectional applications like Gigabit Ethernet.



### Superior product performance

The PowerCat 6 solution utilises our RJ-45 DataGate™ connector technology. The DataGate connector features a patented 'spring-loaded shutter' providing protection from dust and contaminants, and the patented V-shaped IDC contacts improve installation speed and enhance cable retention.

Designed to support high speed networks, cable is available in both PVC or LS0H sheaths, with patch cords available in LS0H sheaths. An angled patching solution is also available to support high density installations where communications room space is limited.

### Independently tested

To ensure that our product consistently performs to the optimum performance we are partnered with Intertek ETL SEMKO - the world's largest product and commodities testing organisation - to objectively test and verify the Channel and Link performance of the PowerCat 6 solution.

ETL randomly purchase Molex Category 6 products off the open market and tests them to verify performance specified by the ANSI/TIA/EIA-568-C.2 and ISO/IEC 11801 Ed. 2.2 industry standards. This testing is completed independently of Molex and in the event that any products fail, ETL verification status is removed. Our continuous affiliation to this programme provides a further safety net to our customers, ensuring they always receive the best quality product.



## Ordering Information

### Cable

Order No.	Description
CAA-00076	PowerCat 6 4 Pair PVC Cable, CM Rated, 305m Reel in a Box - Blue
CAA-00176	PowerCat 6 4 Pair PVC Cable, CM Rated, 305m Reel in a Box - Grey
CAA-00200	PowerCat 6 4 Pair LS0H Cable, CM Rated, 305m Reel in a Box - Purple

### Patch Panels

Order No.	Description
PID-00141	24 Port PowerCat 6 Patch Panel, 568A/B, 1U
PID-00142	48 Port PowerCat 6 Patch Panel, 568A/B, 2U
PID-00156	24 Port Angled PowerCat 6 Patch Panel, 568A/B, 1U
PID-00157	48 Port Angled PowerCat 6 Patch Panel, 568A/B, 2U

Note: Patch Panel accessories are available. Please refer to our Product & Solutions Guide for more information

### Patch Cords

Order No.	Description
PCD-02000-**	PowerCat 6 U/UTP LS0H Patch Cord 0.5m
PCD-02001-**	PowerCat 6 U/UTP LS0H Patch Cord 1m
PCD-02002-**	PowerCat 6 U/UTP LS0H Patch Cord 1.5m
PCD-02003-**	PowerCat 6 U/UTP LS0H Patch Cord 2m
PCD-02005-**	PowerCat 6 U/UTP LS0H Patch Cord 3m
PCD-02009-**	PowerCat 6 U/UTP LS0H Patch Cord 5m
PCD-02013-**	PowerCat 6 U/UTP LS0H Patch Cord 7m
PCD-02019-**	PowerCat 6 U/UTP LS0H Patch Cord 10m

Note: Insert colour code instead of \*\* in part number when ordering patch cords: 0C= Red, 0E=Grey, 0H=Blue, 0J=Green, 0K=Yellow, 0W=White, 0P=Purple, 0N=Orange, BK=Black

### Work Area Jacks

Order No.	Description
KSJ-00018-02	PowerCat 6 DG Jack, 568A/B - White
MEU-00056-02	PowerCat 6 Keystone Jack, 568A/B - White
MGB-00001-02	PowerCat 6 MOD-Clip DG Jack, 568A/B - White
MMC-00017-04	PowerCat 6A MOD-Clip Shielded Jack 8W 568 A/B Black
MMC-00017-02	PowerCat 6A MOD-Clip Shielded Jack 8W 568 A/B White
MMC-00020-02	PowerCat 6A Side Entry MOD-Clip DG Jack, RJ45, 568 A/B - White Shutter
MMC-00020-04	PowerCat 6A Side Entry MOD-Clip DG Jack, RJ45, 568 A/B - Black Shutter

Note: Work area jacks are available in various colours to suit all environments and decor. Please refer to our website for more information

### Work Area Modules

Order No.	Description
WPJ-00031-02	1 Port MOD-Clip DG Wallplate - White
WPJ-00032-02	2 Port MOD-Clip DG Wallplate - White
WPJ-00033-02	4 Port MOD-Clip DG Wallplate - White
WPJ-00040-02	3 Port MOD-Clip DG Wallplate - White
WPJ-00034-02	1 Port 86 x 86 DG Wallplate - White
WPJ-00035-02	2 Port 86 x 86 DG Wallplate - White
WPJ-00036-02	3 Port 86 x 86 DG Wallplate - White
WPJ-00037-02	4 Port 86 x 86 DG Wallplate - White
WSY-00012-02	1 Port 86 x 86 Synergy Wallplate Unloaded - White
WSY-00013-02	2 Port 86 x 86 Synergy Wallplate Unloaded - White
WSY-00014-02	4 Port 86 x 86 Synergy Wallplate Unloaded - White
WPJ-00025-02	1 Port 86 x 86 Keystone Jack Wallplate, Shuttered, Unloaded - White
WPJ-00026-02	2 Port 86 x 86 Keystone Jack Wallplate, Shuttered, Unloaded - White

### Accessories

CSP-00021-**	Blank 6-Pack Icons (Bag of 10)
CSP-00022-**	Data 6-Pack Icons (Bag of 10)
CSP-00023-**	Voice 6-Pack Icons (Bag of 10)

\*\*Colour Options - 01=Almond, 02=White, 04=Black, 05=Ivory, 08=Light Grey, RD=Red, BL=Blue, GR=Green, YL=Yellow, RG=Orange, PP=Purple

### Consolidation Points

Order No.	Description
CPT-00032	PowerCat 6 6 Port Consolidation Point Enclosure, UTP, 568A/B
CPT-00033	PowerCat 6 8 Port Consolidation Point Enclosure, UTP, 568A/B



#### Americas

Corporate Headquarters  
+1 630 969 4550

#### Asia Pacific

Australia  
+61 3 9971 7111  
China  
+86 21 5048 0889  
India  
+91 80 4129 3500

#### EMEA

United Kingdom  
+44 (0)2392 205 800  
Czech Republic  
+420 222 191 418  
Poland  
+48 22 333 81 50  
Russia  
+7 495 642 64 55  
Ukraine  
+38 (044) 494 2642  
Middle East  
+971 4 299 0430  
South Africa  
+27 11 513 4223

