

# Network Cabinets Accessories

## Plinths, Shelves, Castors, Blanking and Cable Entry Plates >

Molex offers a full range of accessories designed specifically for compatibility with the Molex network cabinet product range.

### Plinths

Manufactured from sheet steel and powder coated, the plinth units are supplied in a range of widths and depths to suit the cabinet type. The design of the plinth makes it possible to remove and replace the covers even when the cabinet is fully loaded with equipment. The plinths are supplied with four corner units, three solid panels (front and sides) and one brush panel (for the rear) and a fixing kit.



## ORDERING INFORMATION

Order No.	SAP No.	Description
RAA-P-6060-04	181031048	Plinth 100mm (h) 3 solid panels, rear brush panel - 600 x 600mm
RAA-P-6080-04	181031039	Plinth 100mm (h) 3 solid panels, rear brush panel - 600 x 800mm
RAA-P-8060-04	181031050	Plinth 100mm (h) 3 solid panels, rear brush panel - 800 x 600mm
RAA-P-8080-04	181031041	Plinth 100mm (h) 3 solid panels, rear brush panel - 800 x 800mm
RAA-P-60100-04	181031042	Plinth 100mm (h) 3 solid panels, rear brush panel - 600 x 1000mm
RAA-P-80100-04	181031040	Plinth 100mm (h) 3 solid panels, rear brush panel - 800 x 1000mm
RAA-P-60120-04	181031054	Plinth 100mm (h) 3 solid panels, rear brush panel - 600 x 1200mm
RAA-P-80120-04	181031036	Plinth 100mm (h) 3 solid panels, rear brush panel - 800 x 1200mm
RAA-P-100100-04	181031083	Plinth 100mm (h) 3 solid panels, rear brush panel - 1000 x 1000mm

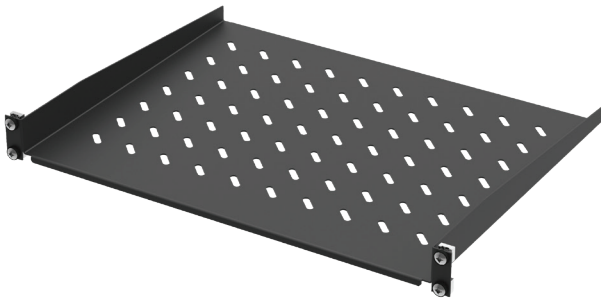
[www.molexces.com/products/cable-management-systems/data-networking-cabinets/](http://www.molexces.com/products/cable-management-systems/data-networking-cabinets/)

# Network Cabinets Accessories

## Plinths, Shelves, Castors, Blanking and Cable Entry Plates >

### Shelves

The shelves are available as pull-out or fixed units, with a choice of heights and depths. The product is designed to accommodate monitors, laptops or other equipment in the cabinet. Manufactured from sheet steel and powder coated, the shelves are supplied with a fixing kit.



RAA-S-F1U-350



RAA-S-P2U-555



RAA-S-F4-450



RAA-S-P4-550

## ORDERING INFORMATION

Order No.	SAP No.	Description
RAA-S-F1U-350	181031058	Fixed shelf 1U 350mm (d)
RAA-S-F2U-450	181031045	Fixed shelf 2U 450mm (d)
RAA-S-P2U-555	181031056	Pull-out shelf 2U 555mm (d)
RAA-S-F4-450	181031044	Fixed shelf 450mm (d) on four 19" mounting profiles
RAA-S-F4-650	181031043	Fixed shelf 650mm (d) on four 19" mounting profiles
RAA-S-P4-550	181031061	Pull-out shelf 550mm (d) on four 19" mounting profiles

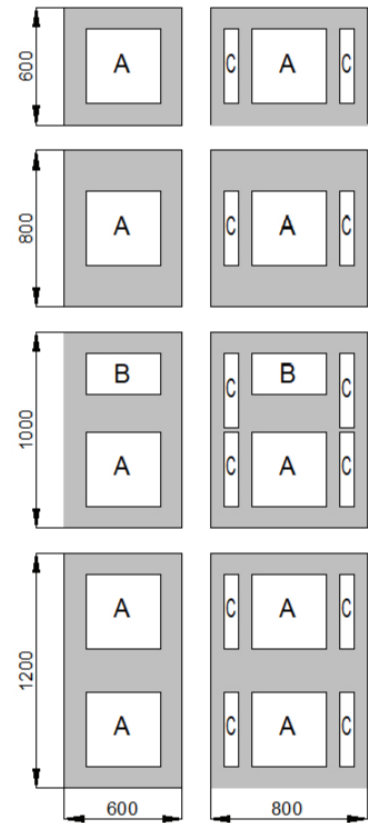
[www.molexces.com/products/cable-management-systems/data-networking-cabinets/](http://www.molexces.com/products/cable-management-systems/data-networking-cabinets/)

# Network Cabinets Accessories

## Plinths, Shelves, Castors, Blanking and Cable Entry Plates >

### Blanking and Cable Entry Plates

Blanking plates include a fabric dust filter for the prevention of dust and particle build-up on sensitive equipment within the cabinet. Manufactured from sheet steel and available in two sizes, 380 x 380mm or 380 x 210mm. The cable entry plates with a brush strip provide a clean and organised cable entry system for the network cabinet, allowing the cable to pass through securely whilst preventing dust and debris from entering the cabinet. The cabinet entry plates are manufactured from sheet steel with a plastic brush and are available in two sizes, 380 x 380mm or 380 x 210mm.



### ORDERING INFORMATION

Order No.	SAP No.	Description
RAA-B-F3838-04	181031064	Blanking plate with a fabric filter, 380x380mm - opening A
RAA-B-F3821-04	181031065	Blanking plate with a fabric filter, 380x210mm - opening B
RAA-B-B3838-04	181031066	Cable entry plate with a brush strip 380x380mm - opening A
RAA-B-B3821-04	181031067	Cable entry plate with a brush strip 380x210mm - opening B
RAA-B-B5	181030129	Brush Strip - opening C

[www.molexces.com/products/cable-management-systems/data-networking-cabinets/](http://www.molexces.com/products/cable-management-systems/data-networking-cabinets/)

# Network Cabinets Accessories

## Plinths, Shelves, Castors, Blanking and Cable Entry Plates >

### Castors

Robust locking castors can be fitted to allow easy movement and positioning of the network cabinet. Locking Castor 150 type are intended for low weight-bearing cabinets, These castors are supplied in a pack of 2 with screws and washers for fixing.

For heavier loads Molex recommend using Locking Castor 300 type. One cabinet requires two locking and two nonlocking castors fitted to the two strengthening bars supplied in each kit. The kits are available with either 600mm (L) or 800mm (L) strengthening bars. Screws and washers for fixing are supplied in the kits.



Locking Castor 150



Locking Castor 300



Strengthening Bar for Castors 300

### Shipping List

#### Fiber Tube Color

#### Locking Castor 300 Kit 600mm:

2 x Locking castor 300 (steering type)  
2 x Non-locking castor 300  
2 x Strengthening bars 600 mm (L)  
Fixing kit

#### Locking Castor 300 Kit 800mm:

2 x Locking castor 300 (steering type)  
2 x Non-locking castor 300  
2 x Strengthening bars 800mm (L)  
Fixing kit

## ORDERING INFORMATION

Order No.	SAP No.	Description
RAA-P-KSB	181030117	Locking castor 150, 2pcs
RAA-P-KSP-600	181030131	Locking castor 300 kit 600mm
RAA-P-KSP-800	181030132	Locking castor 300 kit 800mm

[www.molexces.com/products/cable-management-systems/data-networking-cabinets/](http://www.molexces.com/products/cable-management-systems/data-networking-cabinets/)