

# Xtreme Density Gen II 1RU 144F/192F Fibre Enclosures

**molex**

**The Molex Xtreme Density Fibre Enclosures are ideal for high density applications.**

The Molex High Density Fibre Enclosures are designed for high density applications such as Data Centres, Central Offices or any other situation where high performing, high density and quick installation is required. The enclosures are available in two models, the 144 Fibre Enclosure and the class leading 192 Fibre Enclosure.

This innovative, robust, easy assemble and maintenance 1RU fibre enclosure has been designed for a MTP/MPO LC interface. This excellent space saving solution is ideal for network consolidation as its modular, scalable design provides flexibility for network partitioning and future growth. The rack mounted enclosure has been manufactured using durable powder/liquid coated steel construction ensures years of reliable service. The 19-inch chassis fits industry-standard EIA, ETSI and WECO rack mountable. The 1RU height conserves valuable rack space maximizing "real estate". Quick Release pins on the enclosure front allows easy access as well as patch cord protection. Molex recommends our Bend Insensitive Uniboot Long Reach patch cords for ensuring correct fibre bend radius, lower cable weight and better cable management. These leads feature a long reach tab that allows for easy moves, adds and changes.

## Features and Advantages

192 LC Ports, 8 cassettes and supply 1 MTP/MPO and 24 LC Ports breakout in each cassette

144 LC Ports, 12 cassettes and supply 1 MTP/MPO and 12 LC Ports breakout in each cassette

Designed for 10G/40G/100G/200G/400G system migration

Applied quad LC adapter or MTP/MPO adapter on adapter panel or cassette

Combined with bend insensitive uniboot patch cords for maximum density and reliability

Special guide PIN design made cassette easily plug and draw out

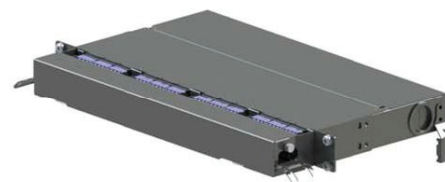
Removable top cover providing easy access to the interior



1RU 192F Xtreme Density Fibre Enclosure



Front door



1RU 144F Xtreme Density Fibre Enclosure

## Specifications

### MECHANICAL

IP Rating: IP20

Adapter Type: LC/MPO/MPT

LC Port Capacity:

192: 192 ports

144: 144 ports

Cassette Capacity:

192: 8 cassettes

144: 12 cassettes

Operating Temperature: -40 to +75°C

### PHYSICAL

Material: Steel

Coating: Powder/Fluid Coating

Thickness: 1.6 mm

Colour: Black (RAL 9004/RAL 9005)

Dimensions: 430mm x 282mm x 44.3mm

Net Weight: 4kg (4.5kg packaged)

Packaged Box: 437mm x 310mm x 243mm

### ENVIRONMENTAL STANDARDS

RoHS compliant

REACH/SvHC compliant

[www.molexces.com](http://www.molexces.com)

Molex is a registered trademark of Molex, LLC in the United States of America and may be registered in other countries; all other trademarks listed herein belong to their respective owners. This information is correct at the time of publication, specifications are subject to change.

# Xtreme Density Gen II 1RU 144F/192F Fibre Enclosures



## Ordering Information

Order No.	SAP No.	Description
XFR-10144	180660086	HD 1 RU Enclosure 12x12F Cassette Capacity MPO/LC 144F
XFR-10192	180660086	Xtreme Density 1 RU Enclosure 8x24F Cassette Capacity MPO/LC 192 F
CMA-00112	Consult Molex	Xtreme Density 1 RU Enclosure Front Door
XFR-14401	181810263	HD 12F Cassette Capacity MPO/LC OS2 Low Loss
XFR-14402	181810264	HD 12F Cassette Capacity MPO/LC OM3 Low Loss
XFR-14403	181810265	HD 12F Cassette Capacity MPO/LC OM4 Low Loss
XFR-19201	181810266	Xtreme Density Cassette Capacity 2X12F MPO/LC OS2 Low Loss
XFR-19202	181810267	Xtreme Density Cassette Capacity 2X12F MPO/LC OM3 Low Loss
XFR-19203	181810268	Xtreme Density Cassette Capacity 2X12F MPO/LC OM4 Low Loss
XFR-19204	181810291	Xtreme Density 8X MPO Adatper Box, Adapter Loaded, SM
XFR-19205	181810292	Xtreme Density 8X MPO Adatper Box, Adapter Loaded, MM
XFR-19206	181810293	Xtreme Density 2X24F To 6X8F MPO Transfer Box, OS2, Low Loss
XFR-19207	181810294	Xtreme Density 2X24F To 6X8F MPO Transfer Box, OM3, Low Loss
XFR-19209	181810295	Xtreme Density Cassette Capacity 1X24F MPO/LC OS2 Low Loss
XFR-19210	181810296	Xtreme Density Cassette Capacity 1X24F MPO/LC OM3 Low Loss
XFR-19211	181810297	Xtreme Density Cassette Capacity 1X24F MPO/LC OM4 Low Loss

[www.molexces.com](http://www.molexces.com)

Molex is a registered trademark of Molex, LLC in the United States of America and may be registered in other countries; all other trademarks listed herein belong to their respective owners. This information is correct at the time of publication, specifications are subject to change.